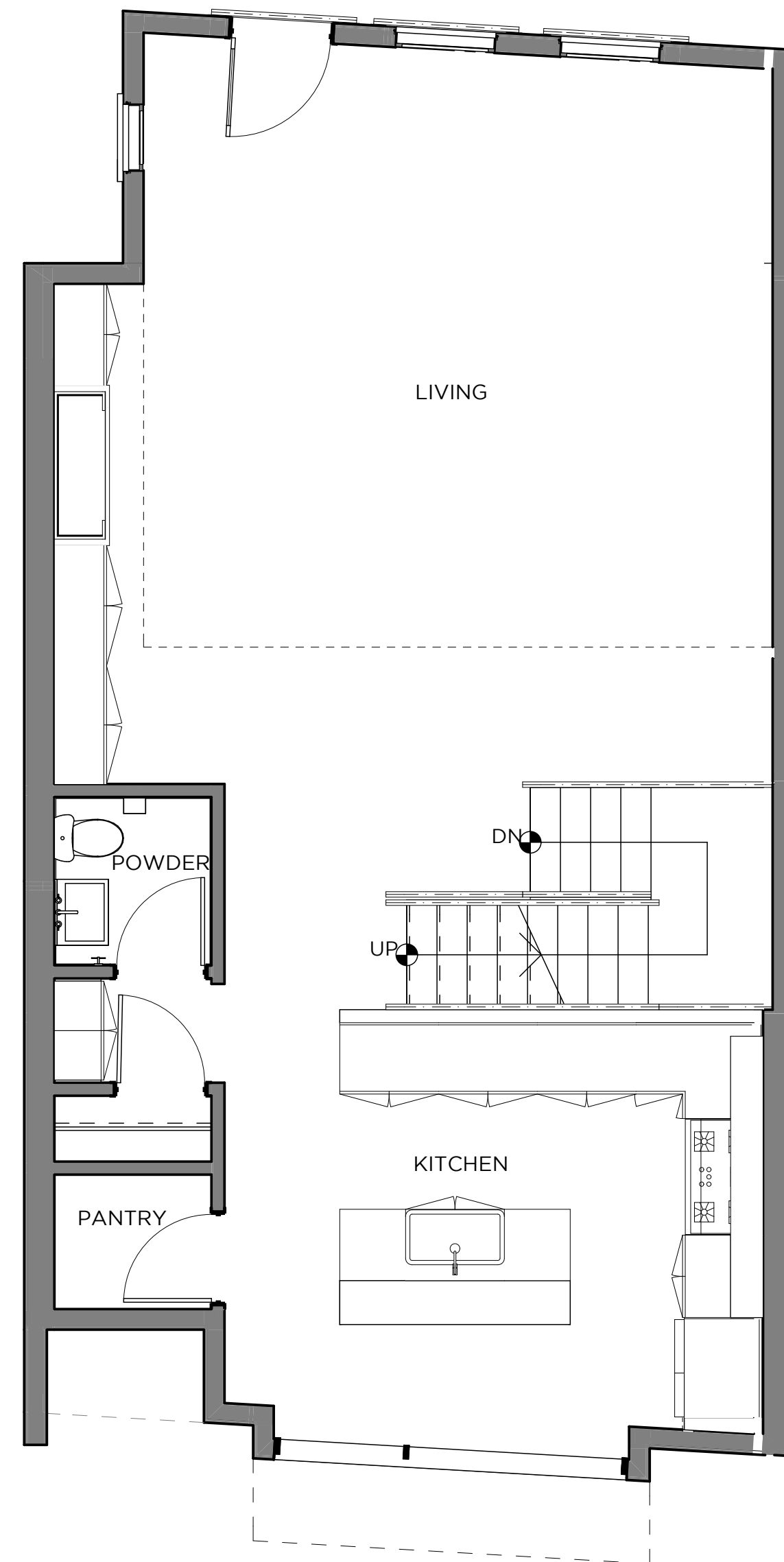
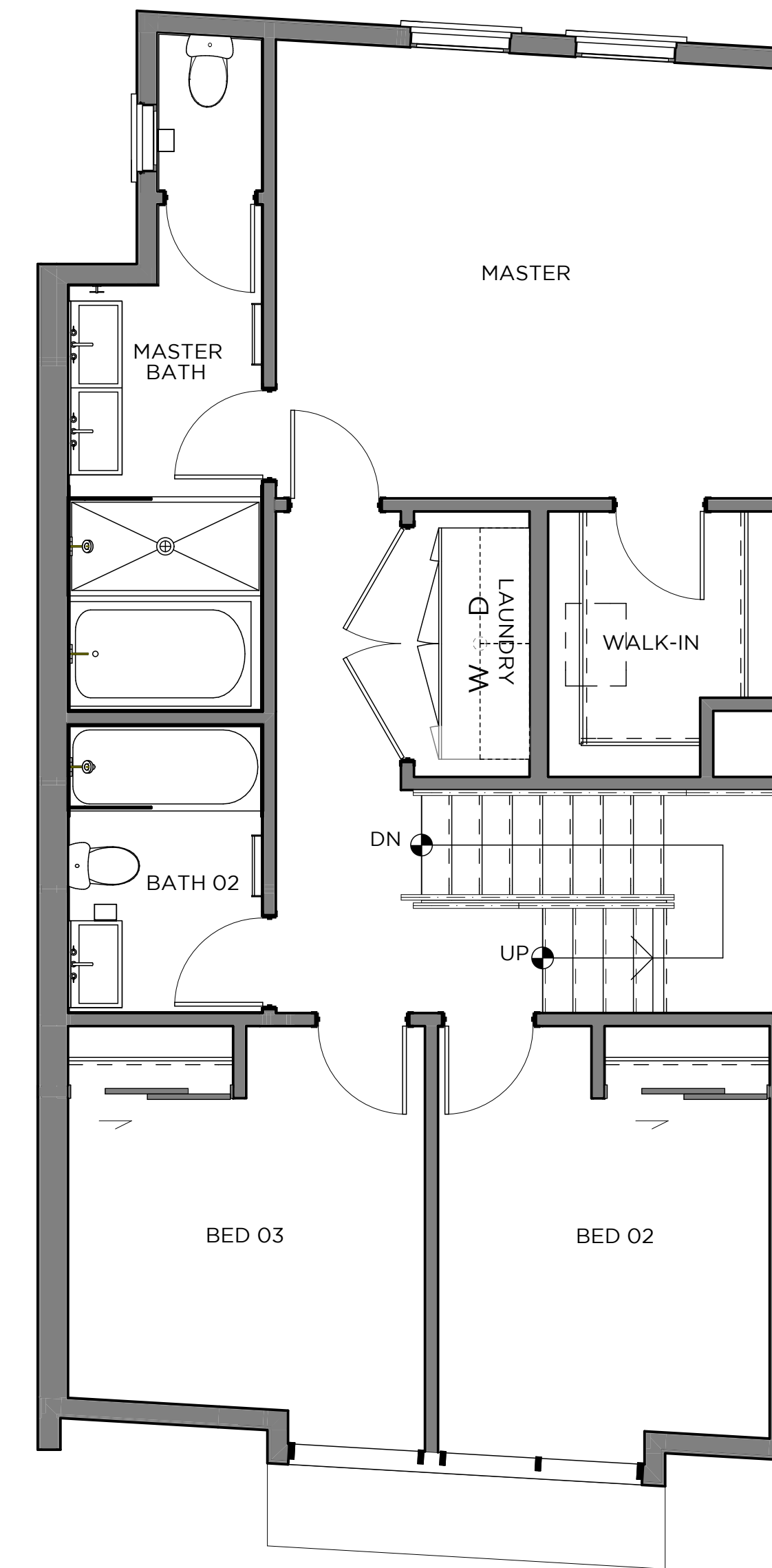


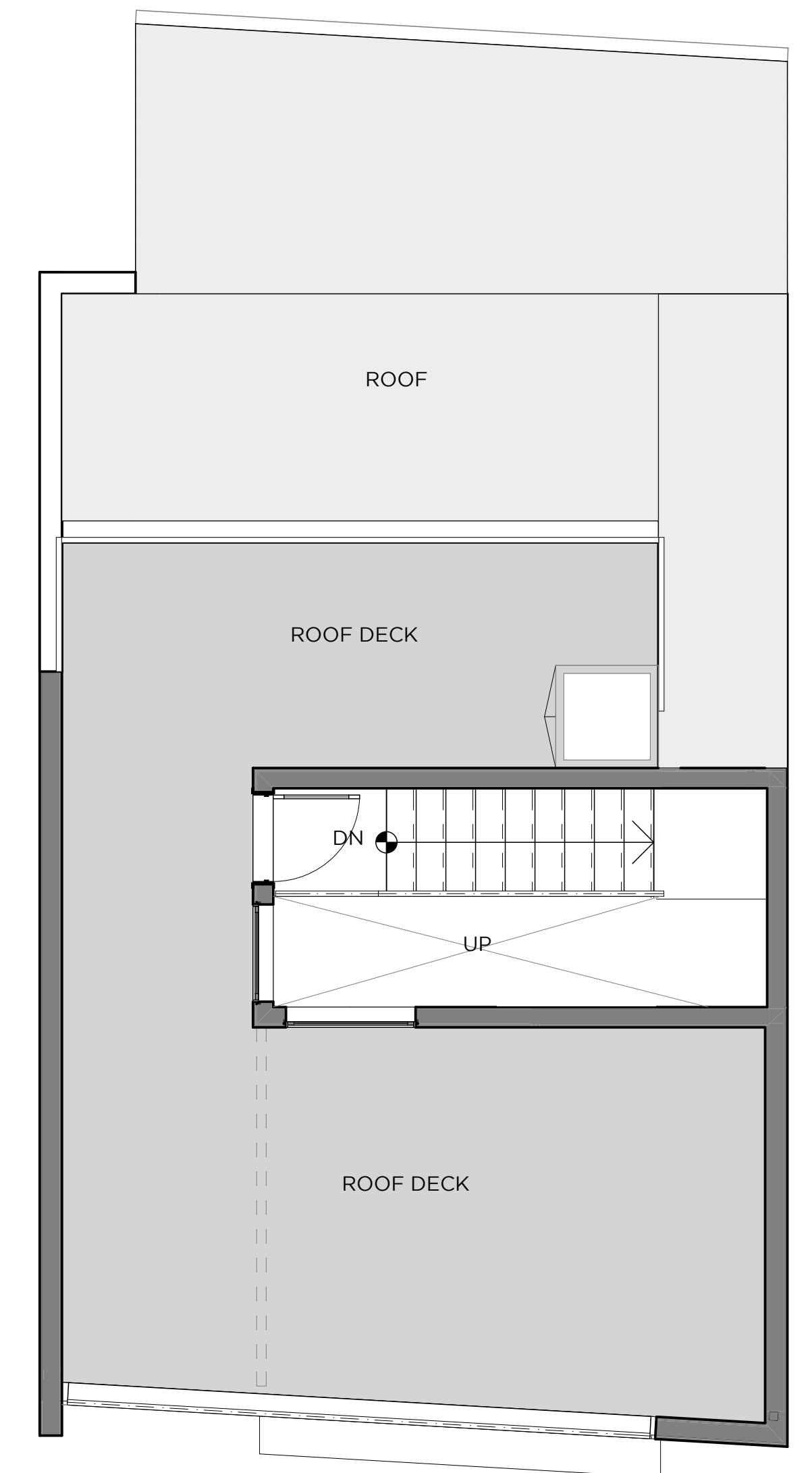
FIRST LEVEL



SECOND LEVEL



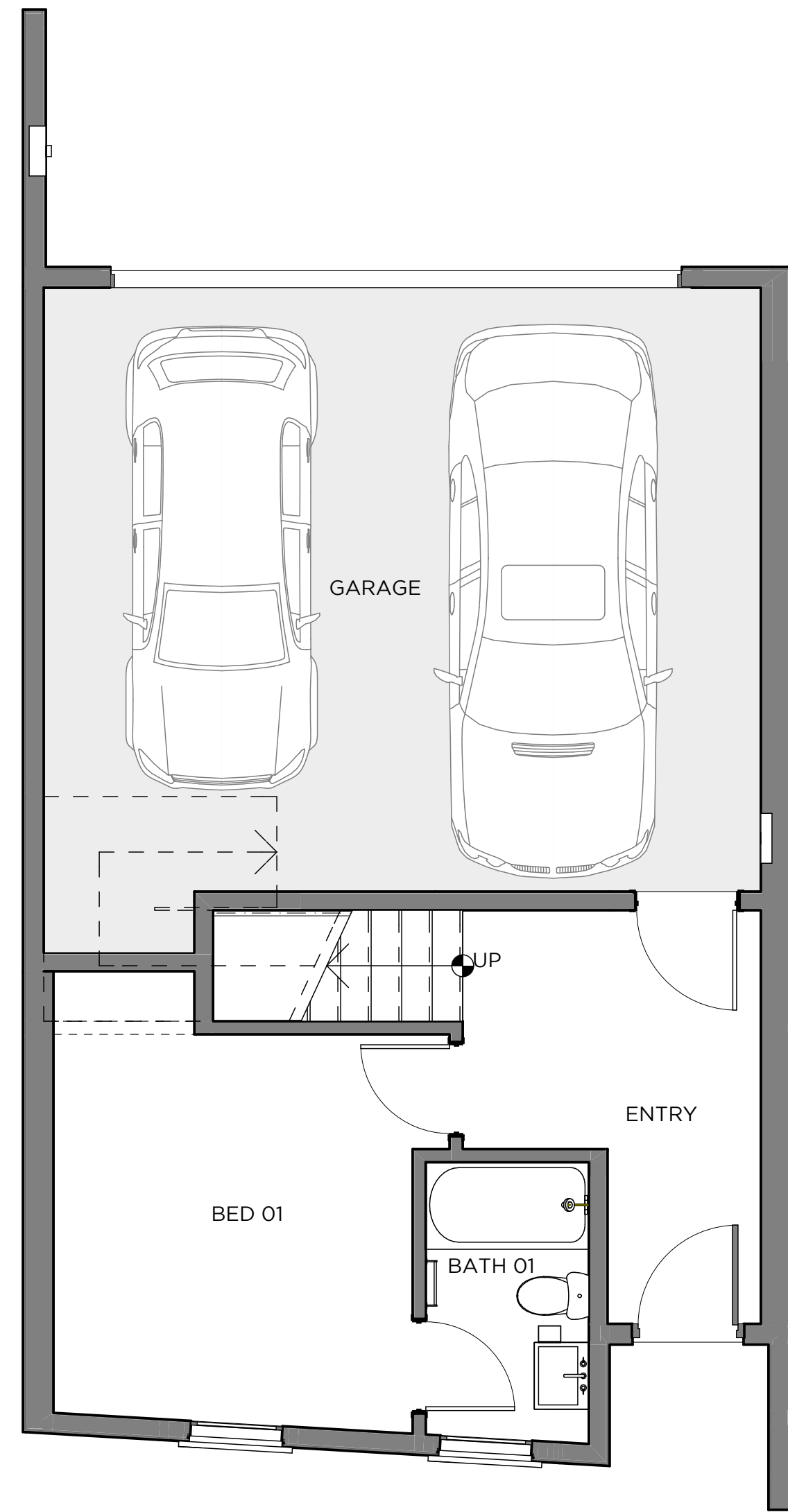
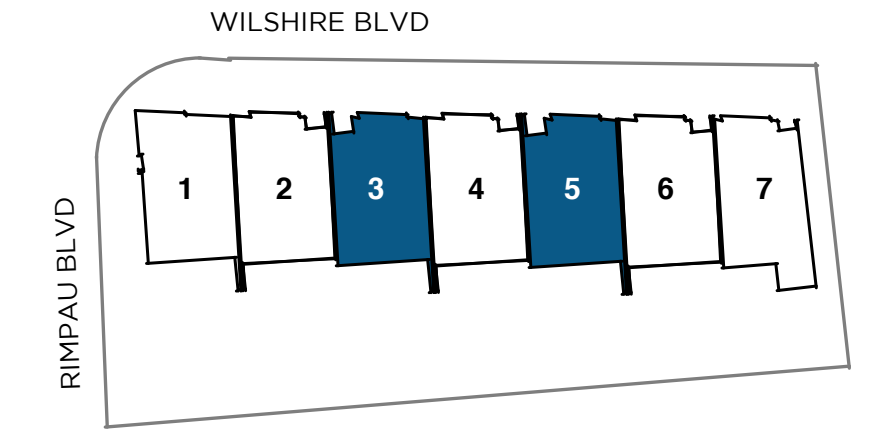
THIRD LEVEL



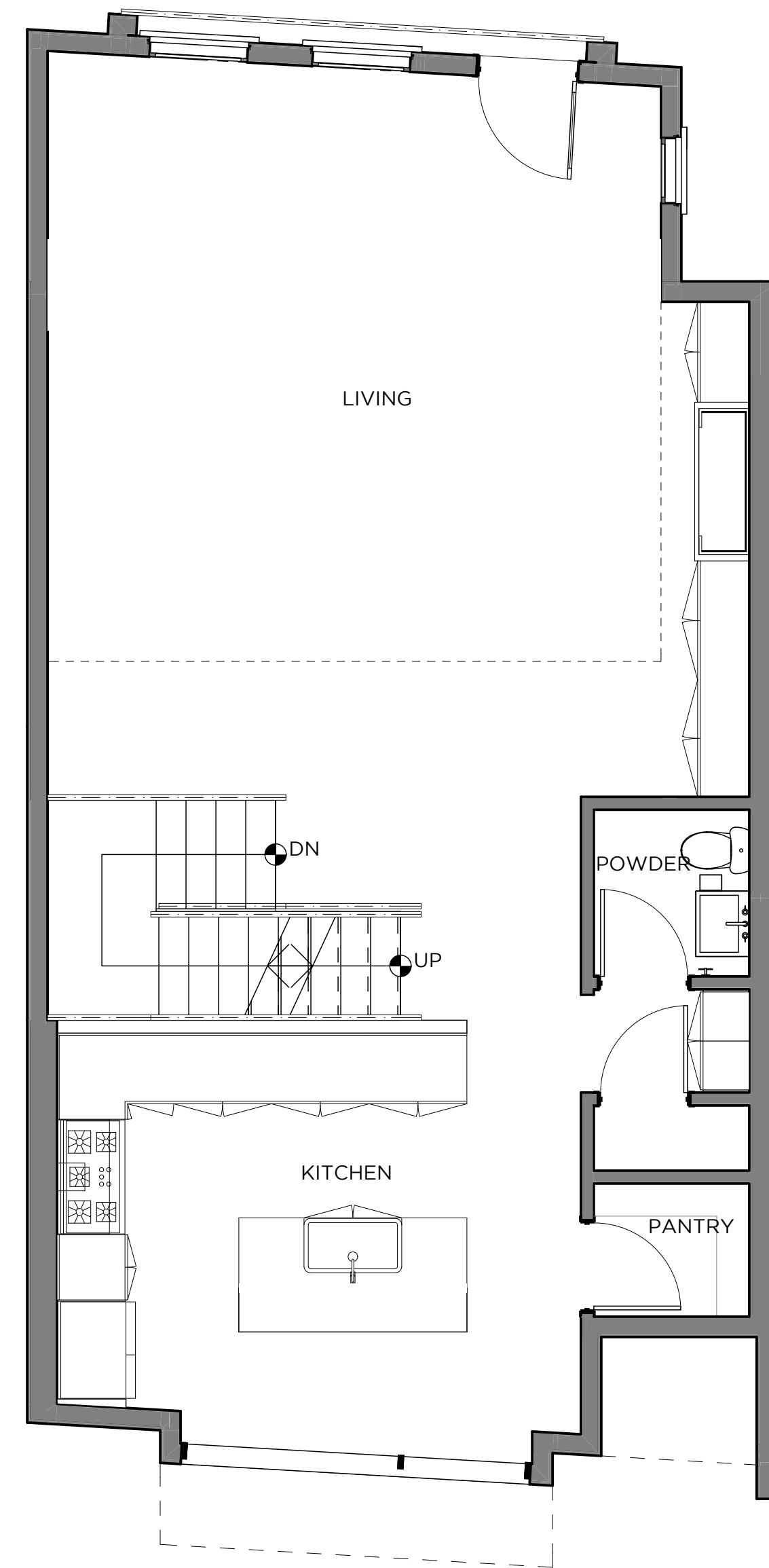
ROOFTOP TERRACE

THESEVENSLA.COM | 323.640.5473 | WILSHIRE & RIMPAU | HANCOCK PARK, CA 90004

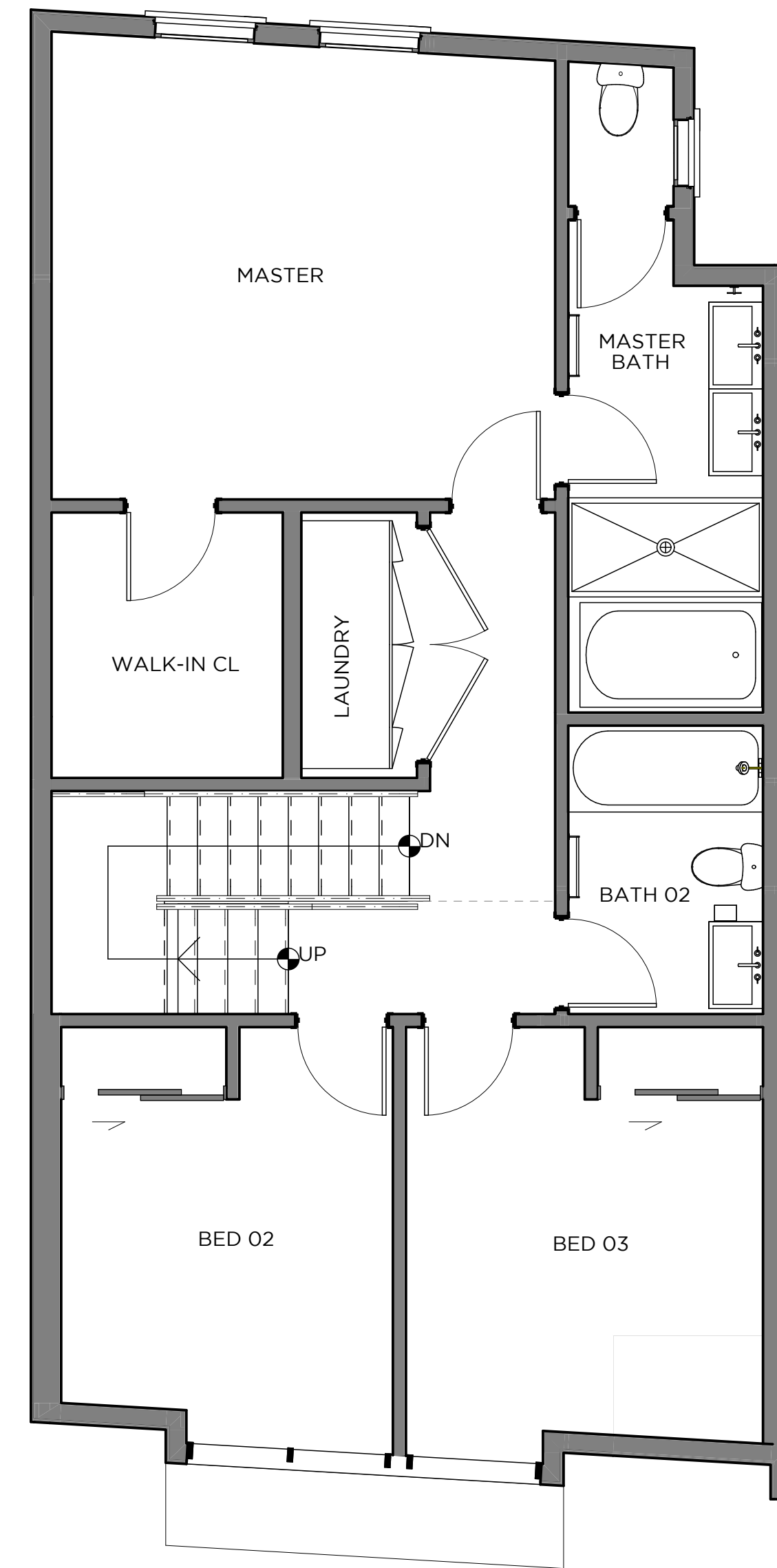
Compass is a licensed real estate broker and abides by Equal Housing Opportunity laws. All material presented herein is intended for informational purposes only. Information is compiled from sources deemed reliable but is subject to errors, omissions, changes in price, condition, sale, or withdraw without notice. No statement is made as to accuracy of any description. All measurements and square footages are approximate. Exact dimensions can be obtained by retaining the services of an architect or engineer. This is not intended to solicit property already listed. DRE 01869103



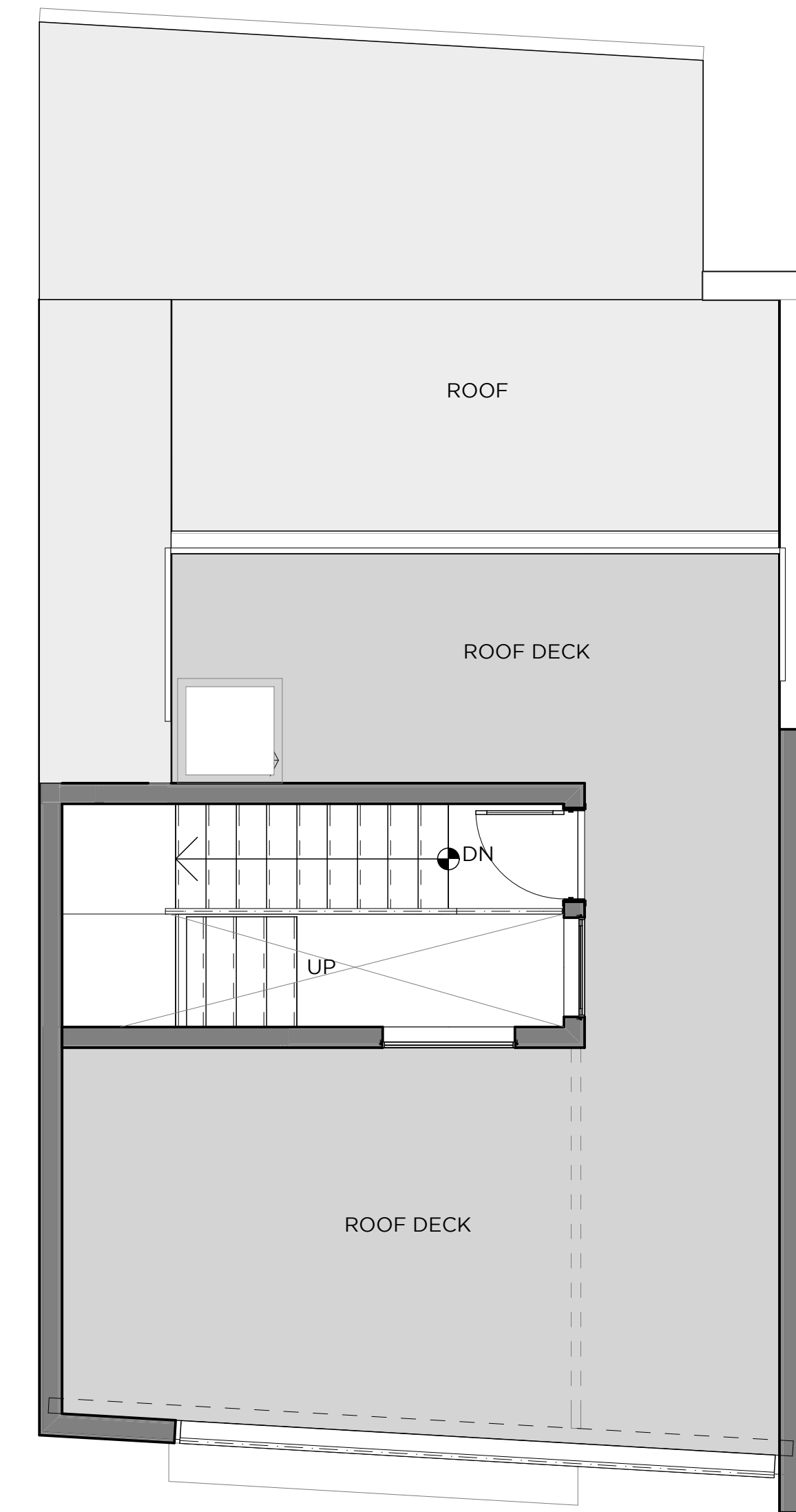
FIRST LEVEL



SECOND LEVEL



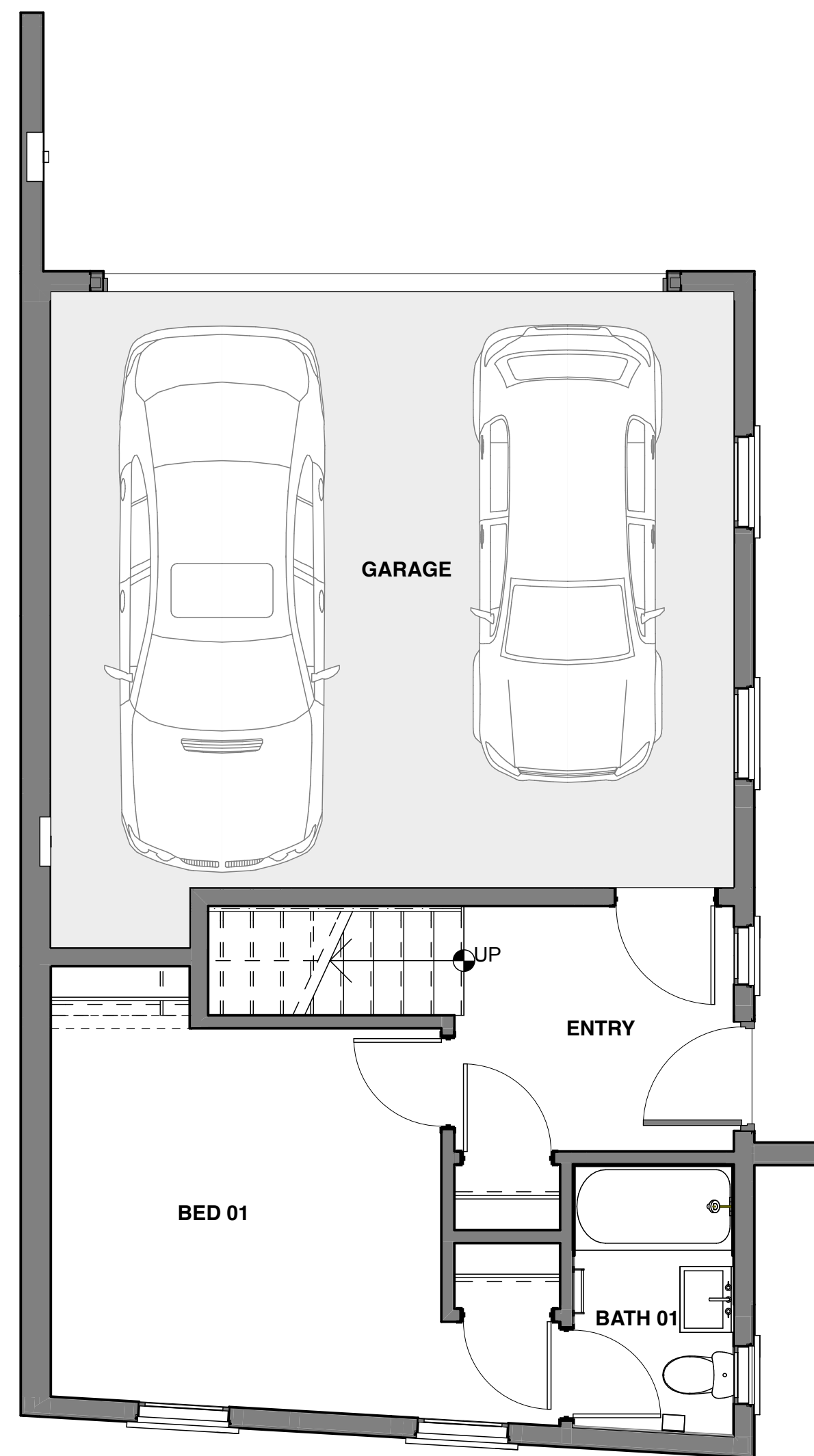
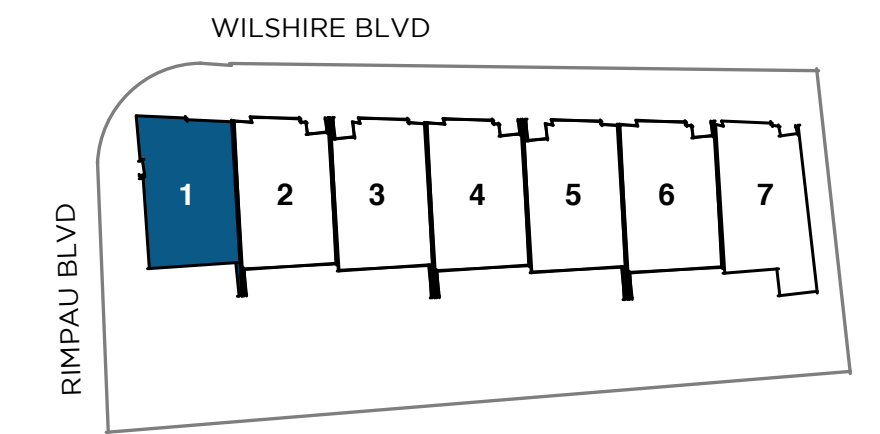
THIRD LEVEL



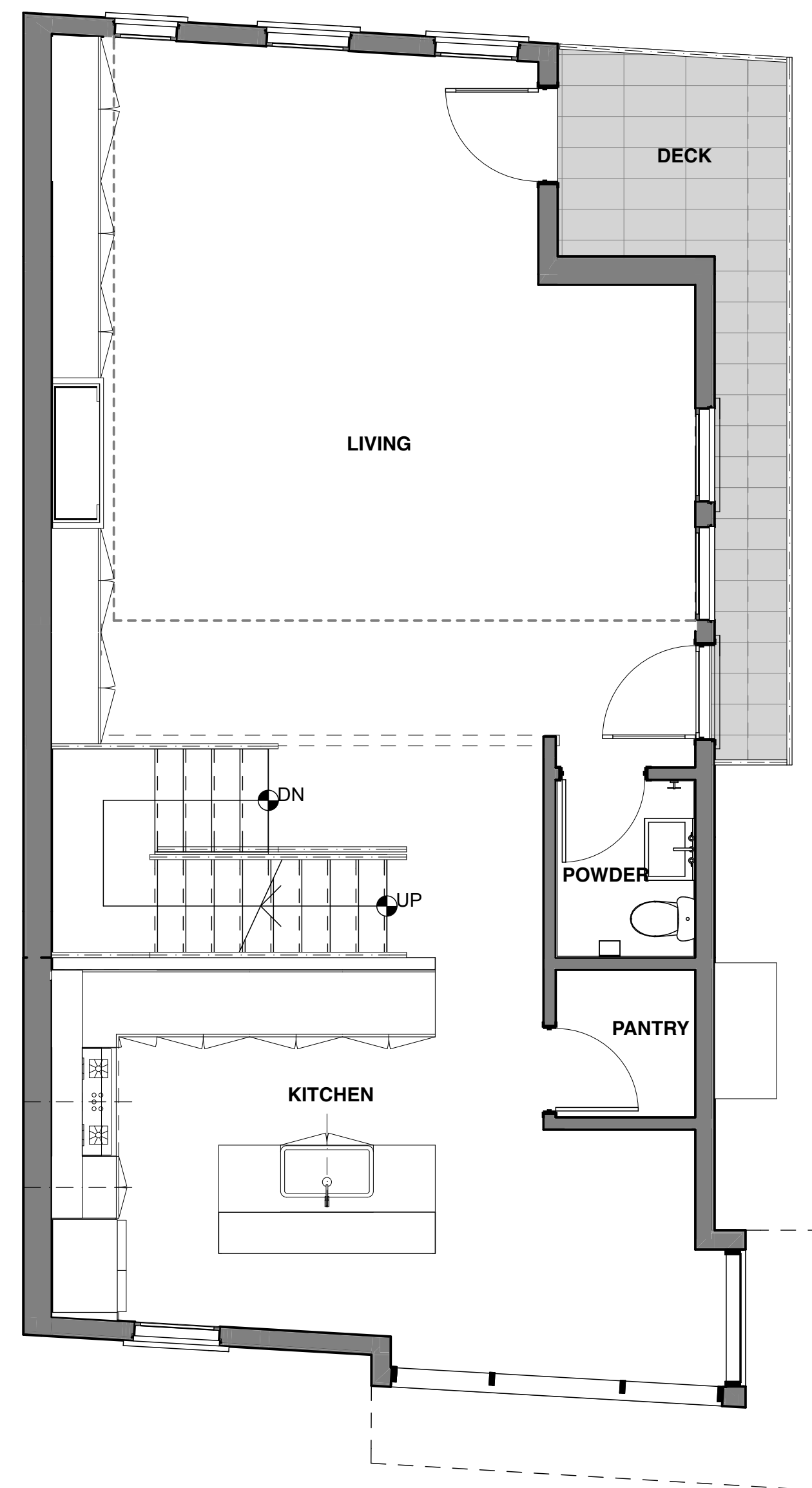
ROOFTOP TERRACE

THESEVENSLA.COM | 323.640.5473 | WILSHIRE & RIMPAU | HANCOCK PARK, CA 90004

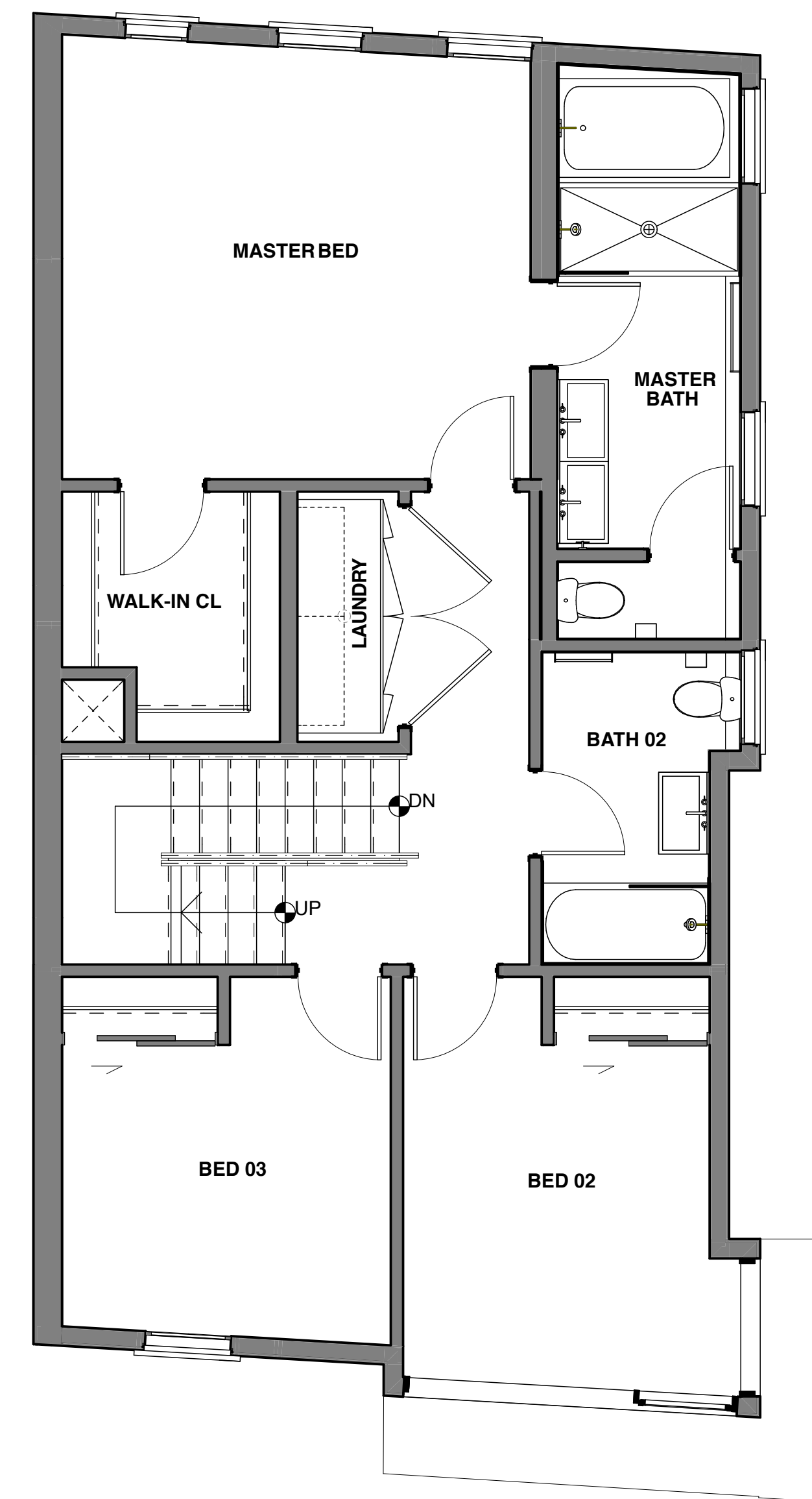
Compass is a licensed real estate broker and abides by Equal Housing Opportunity laws. All material presented herein is intended for informational purposes only. Information is compiled from sources deemed reliable but is subject to errors, omissions, changes in price, condition, sale, or withdraw without notice. No statement is made as to accuracy of any description. All measurements and square footages are approximate. Exact dimensions can be obtained by retaining the services of an architect or engineer. This is not intended to solicit property already listed. DRE 01869103



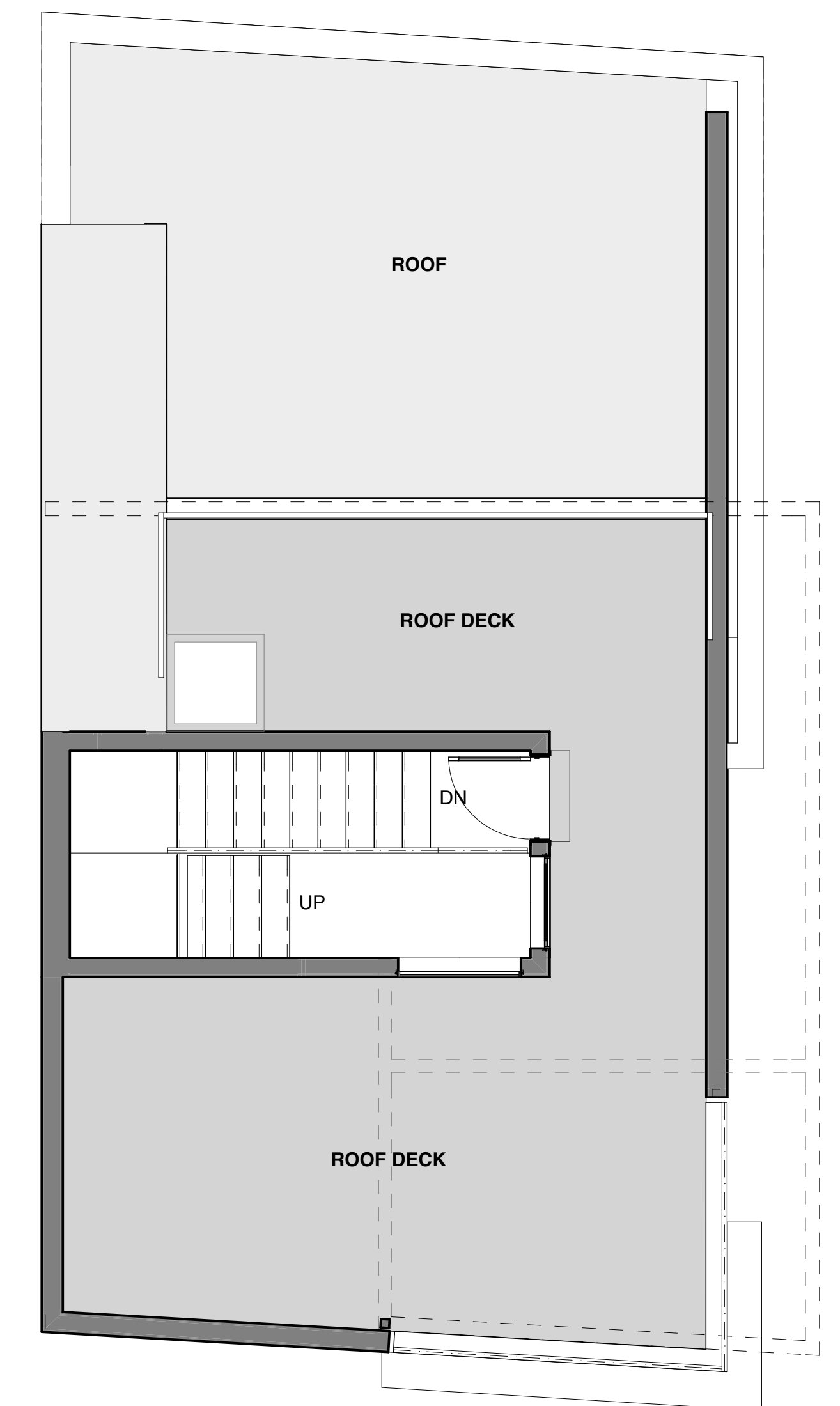
FIRST LEVEL



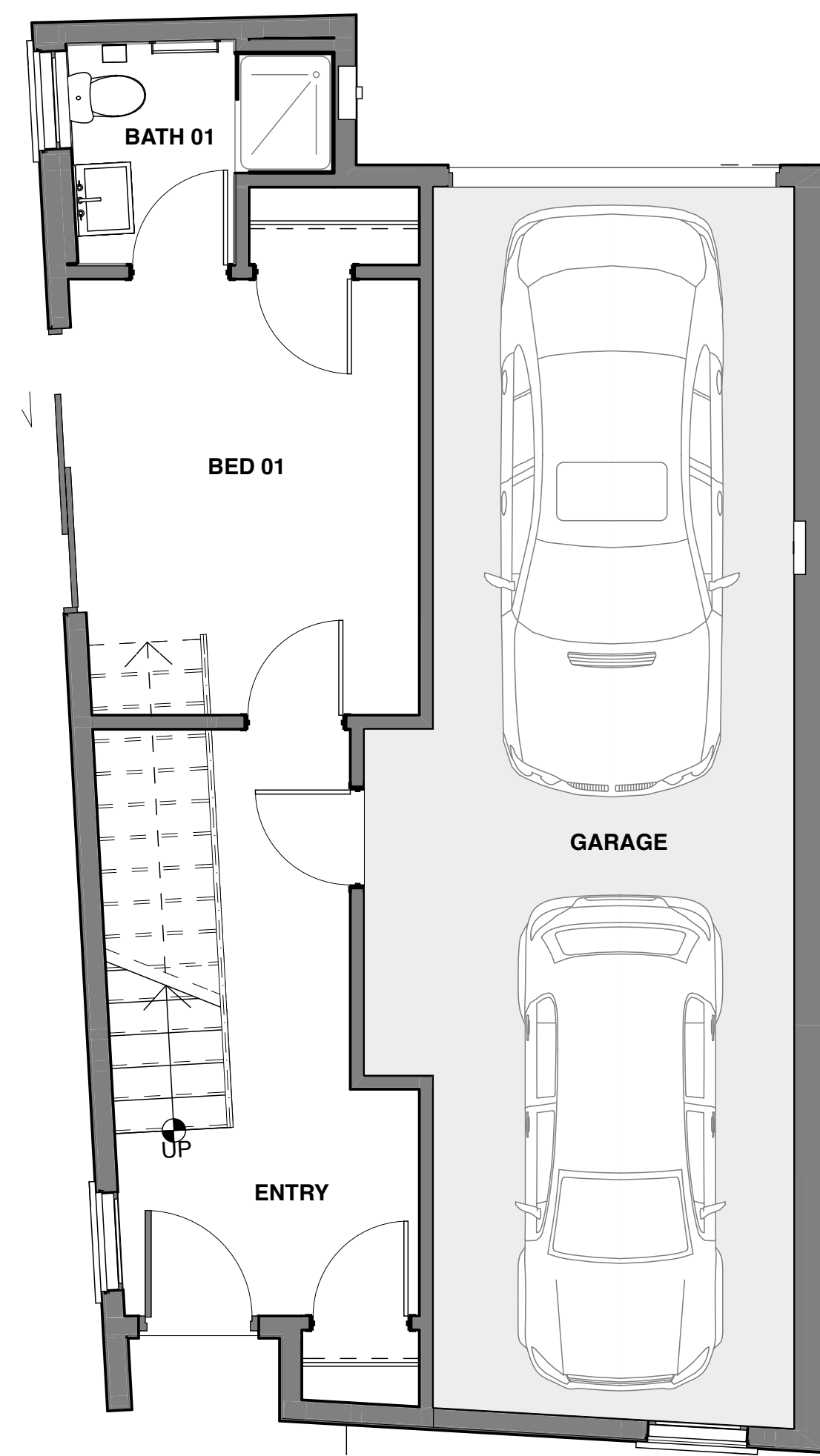
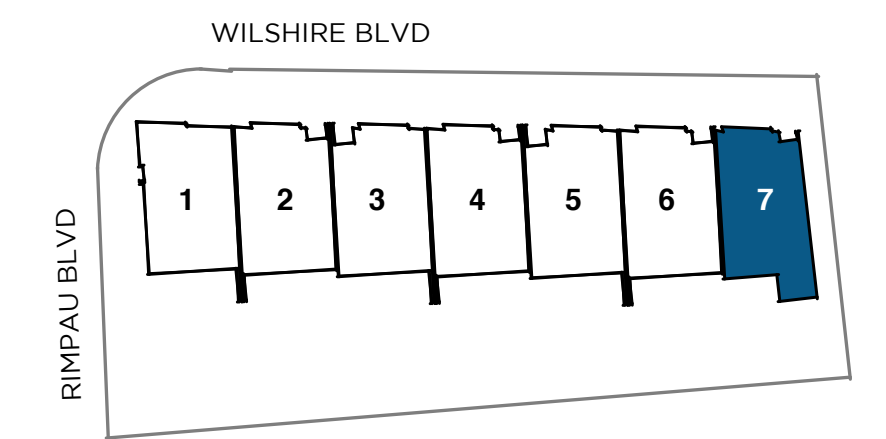
SECOND LEVEL



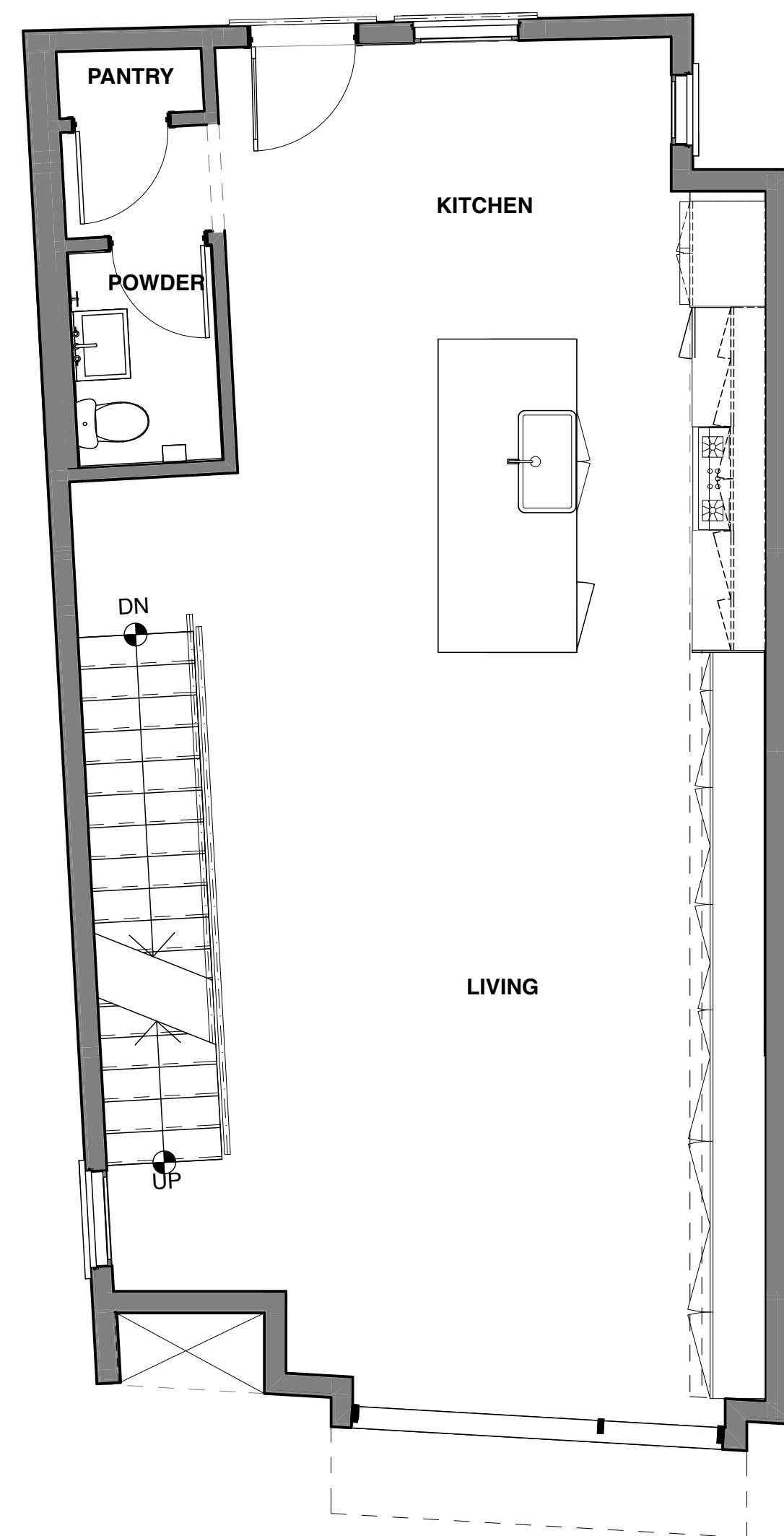
THIRD LEVEL



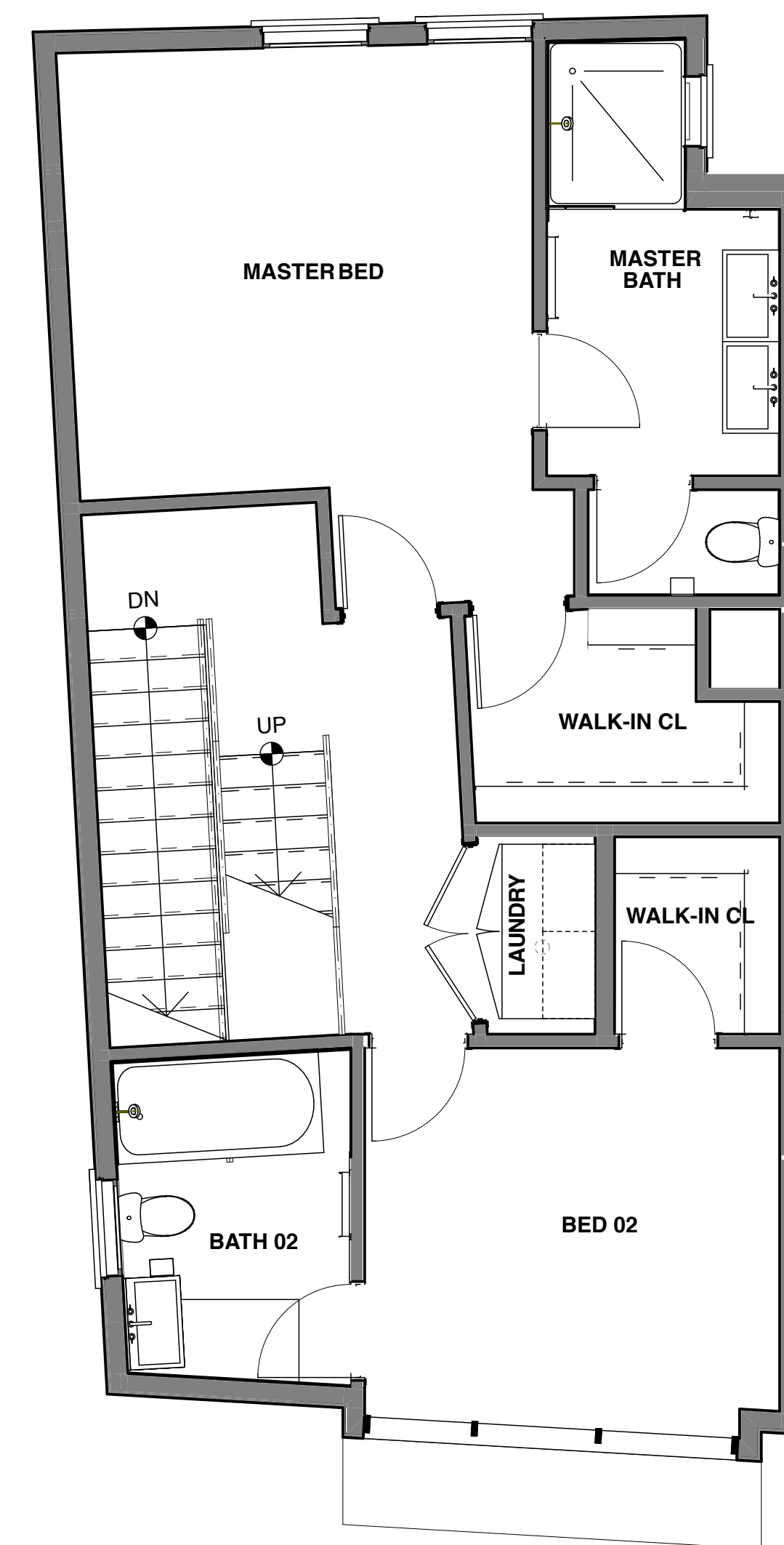
ROOFTOP TERRACE



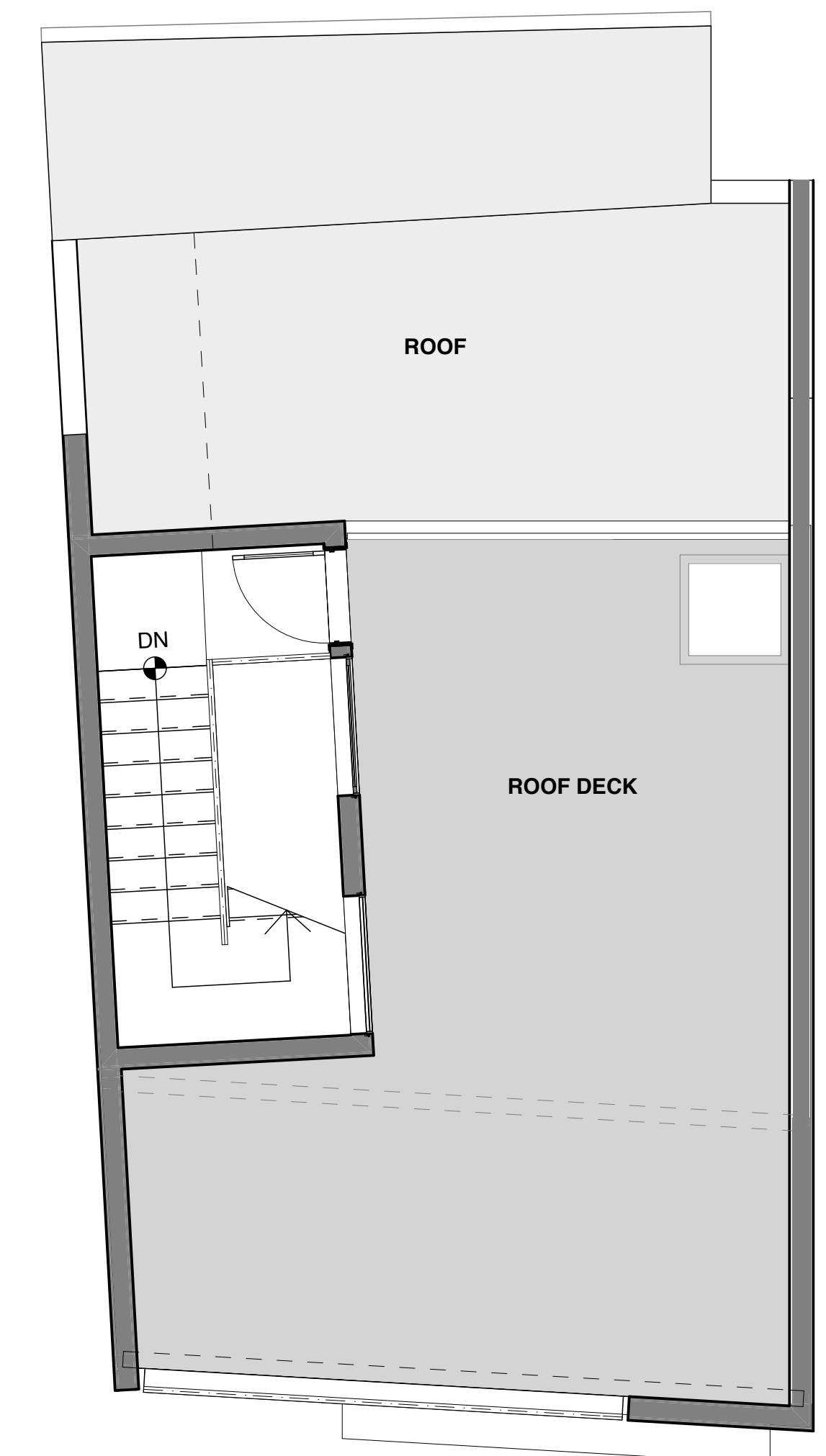
FIRST LEVEL



SECOND LEVEL



THIRD LEVEL



ROOFTOP TERRACE

THESEVENSLA.COM | 323.640.5473 | WILSHIRE & RIMPAU | HANCOCK PARK, CA 90004

Compass is a licensed real estate broker and abides by Equal Housing Opportunity laws. All material presented herein is intended for informational purposes only. Information is compiled from sources deemed reliable but is subject to errors, omissions, changes in price, condition, sale, or withdraw without notice. No statement is made as to accuracy of any description. All measurements and square footages are approximate. Exact dimensions can be obtained by retaining the services of an architect or engineer. This is not intended to solicit property already listed. DRE 01869103