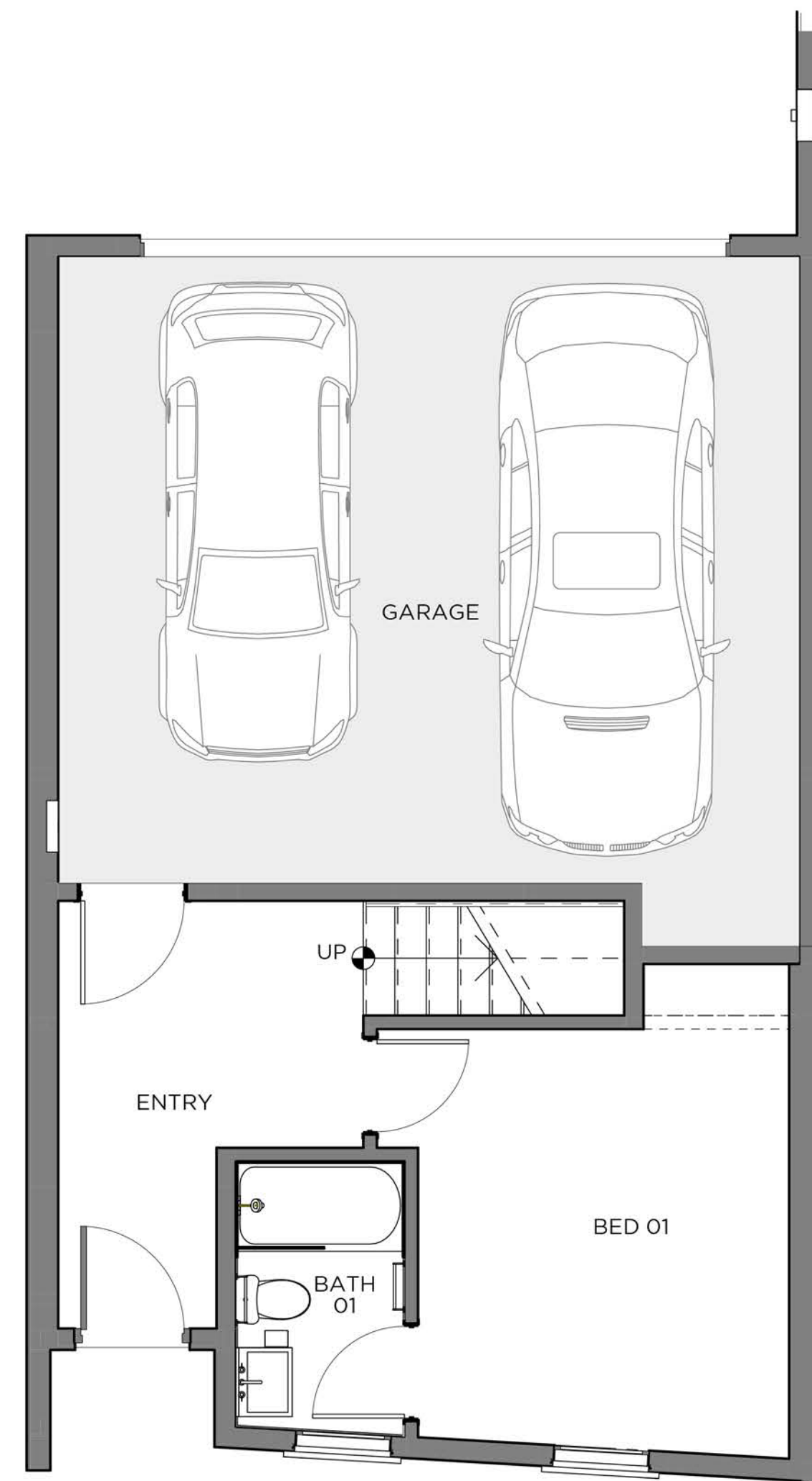
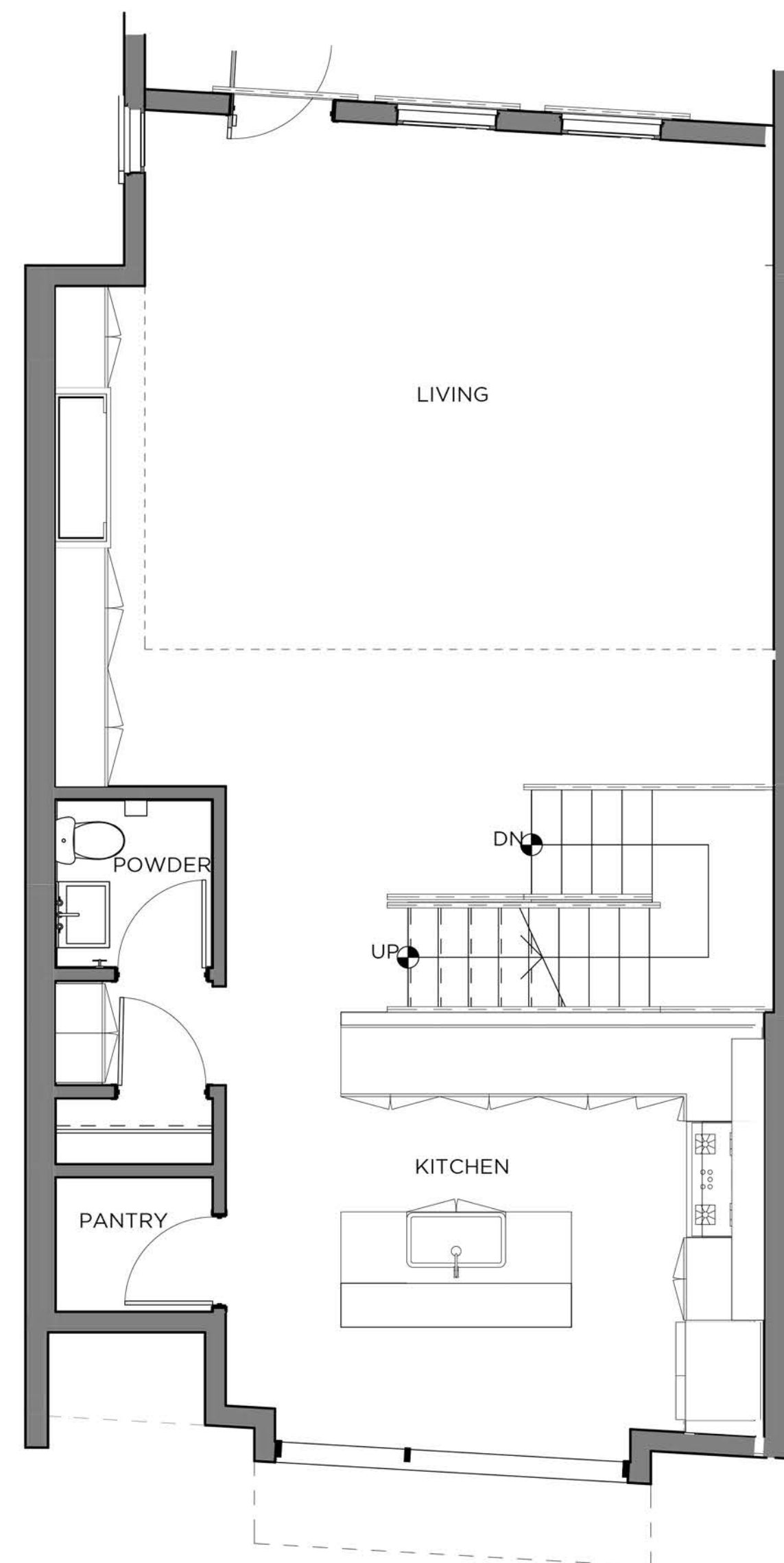


# THE SEVENS

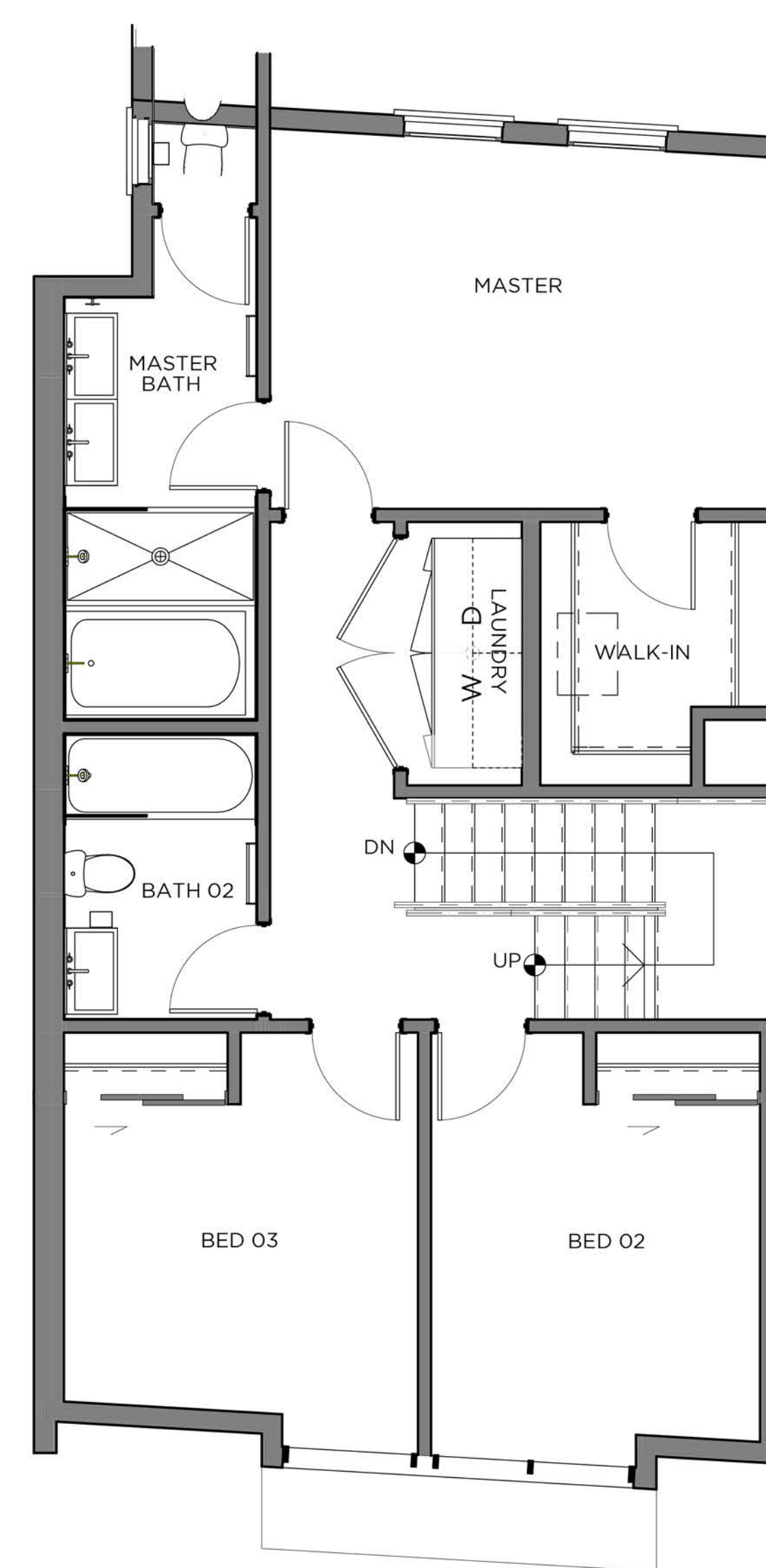
HANCOCK PARK



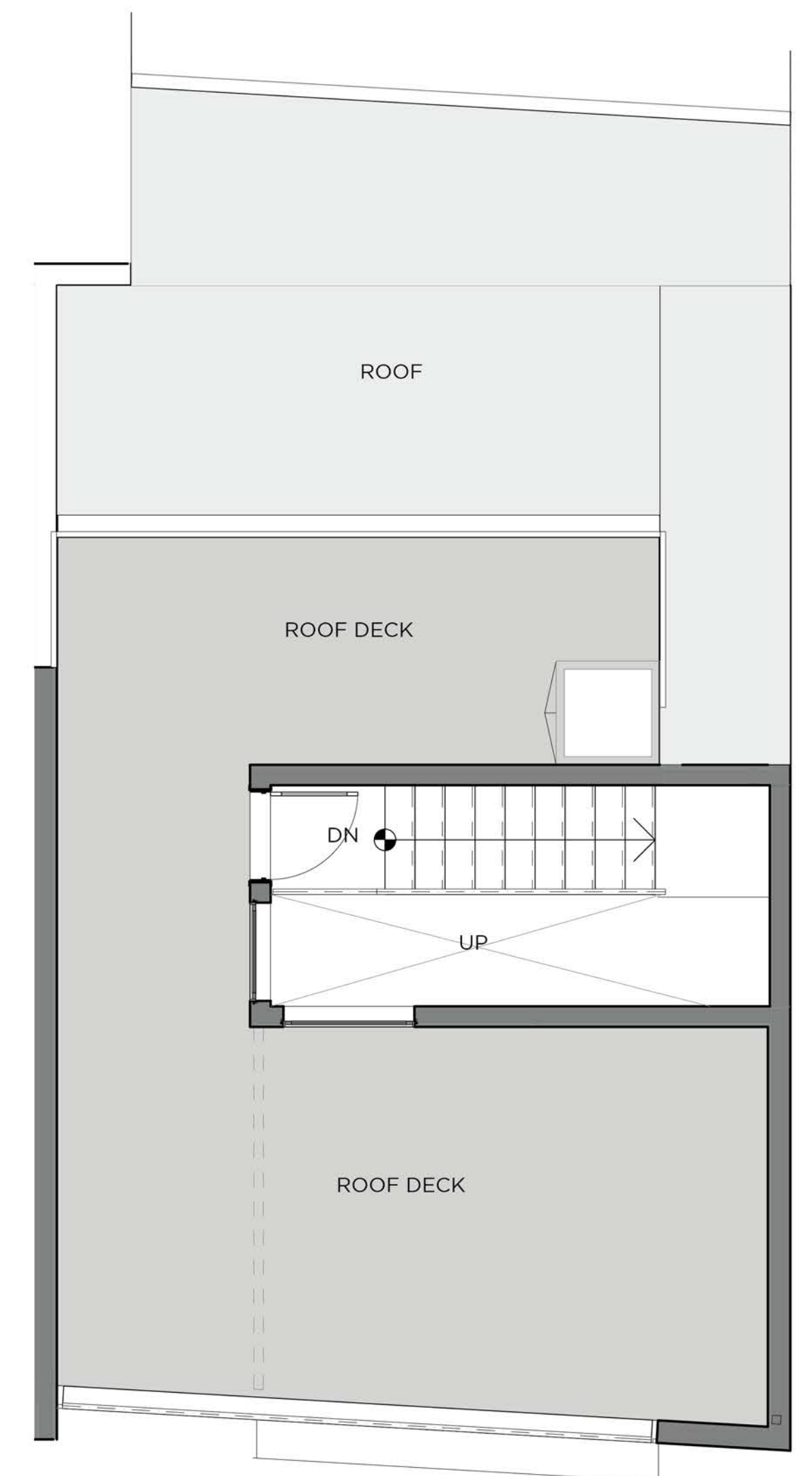
**LEVEL I** First Level Interior 360 SF  
Garage 443 SF



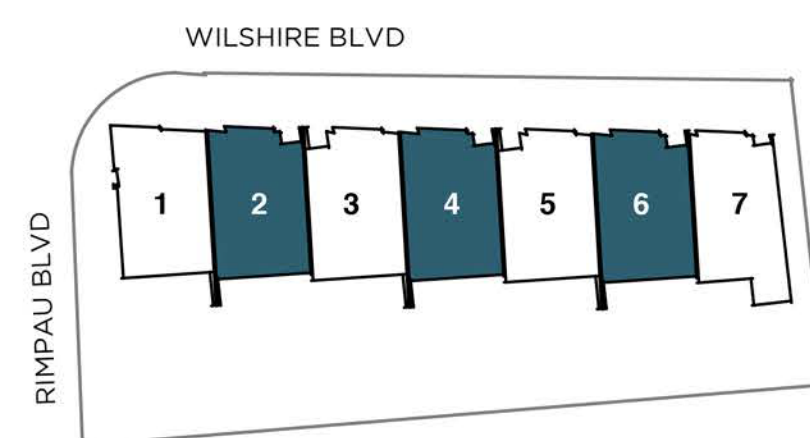
**LEVEL II** Second Level Interior 958 SF  
Second Level Deck 91 SF



**LEVEL III** Third Level 979 SF



**ROOFTOP TERRACE** Roof Deck 463 SF  
Roof Deck Enclosed Area 132 SF



## RESIDENCES TWO, FOUR & SIX

FOUR BEDROOM | THREE BATHROOM | DETACHED TOWNHOMES  
2,429 SF

THESEVENSLA.COM | 424.233.0922 | WILSHIRE & RIMPAU | HANCOCK PARK, CA 90004

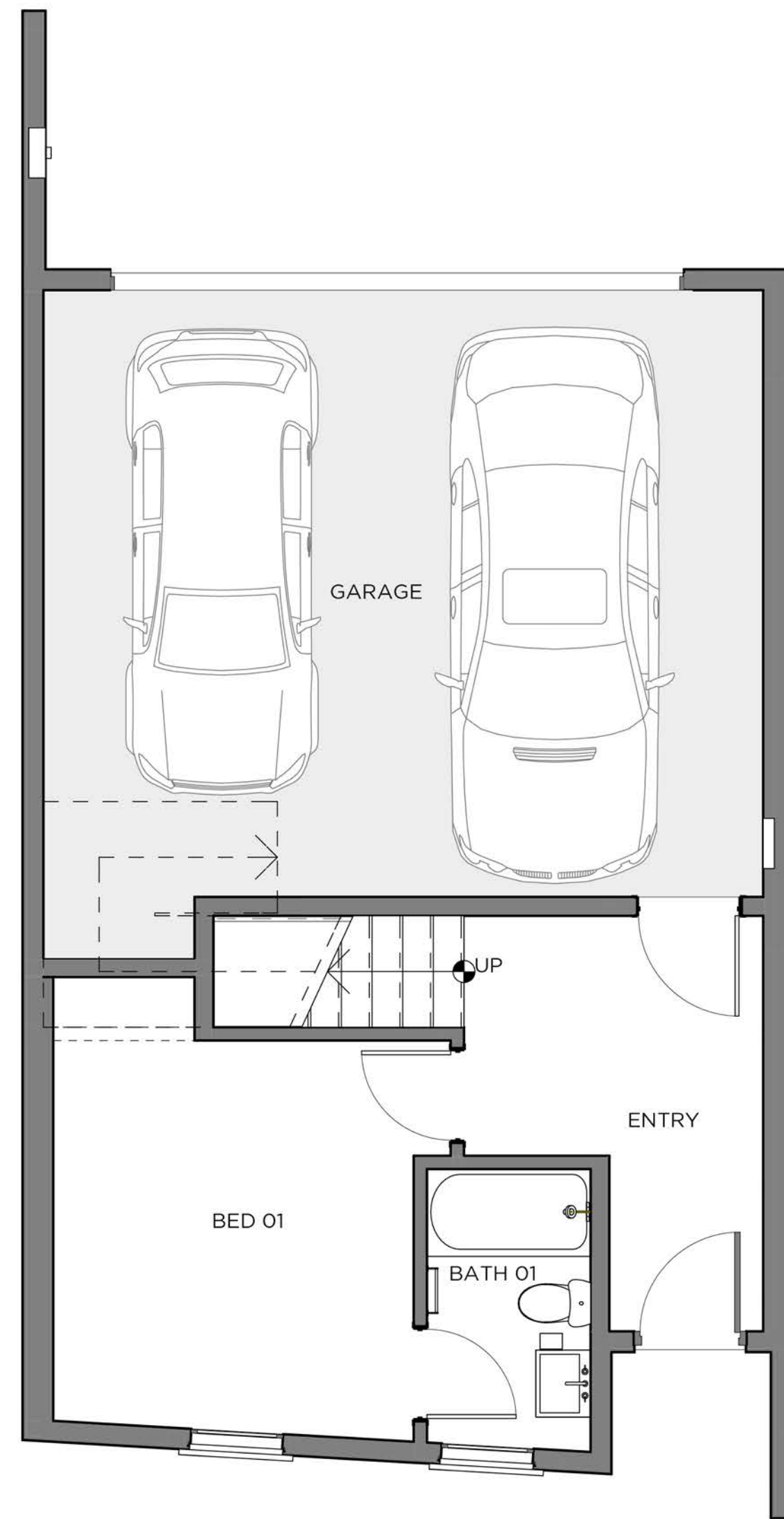
THE DEVELOPER RESERVES THE RIGHT TO MAKE MODIFICATIONS IN MATERIALS, SPECIFICATIONS, PLANS, PRICING, VARIOUS FEES, DESIGNS, SCHEDULING AND DELIVERY OF HOMES WITHOUT PRIOR NOTICE. THIS IS NOT AN OFFER TO SELL OR SOLICITATION TO BUY TO RESIDENTS IN JURISDICTIONS IN WHICH REGISTRATION REQUIREMENTS HAVE NOT BEEN FULFILLED, BUT IS INTENDED FOR INFORMATION ONLY. CALDRE# 01973483



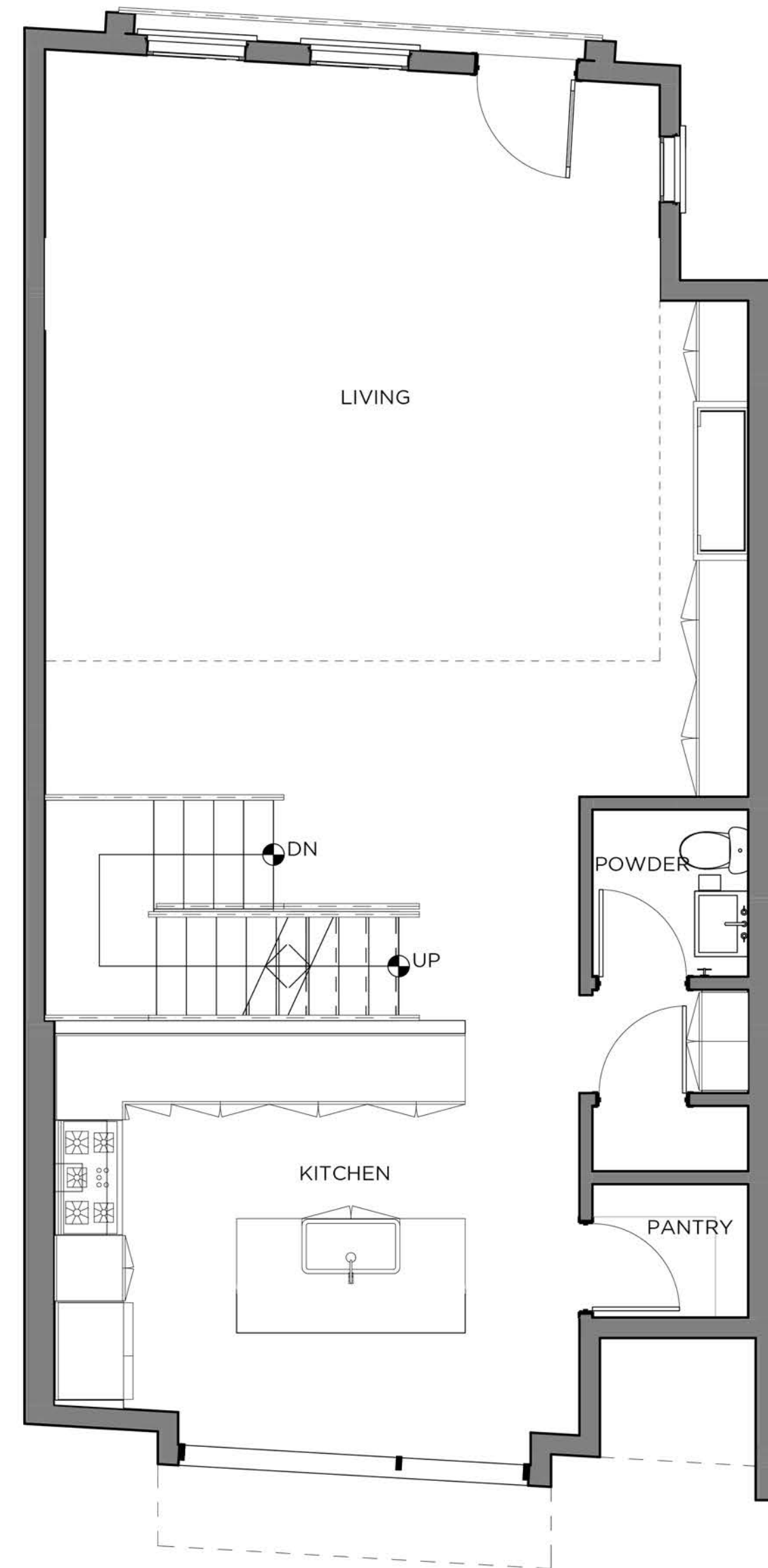


# THE SEVENS

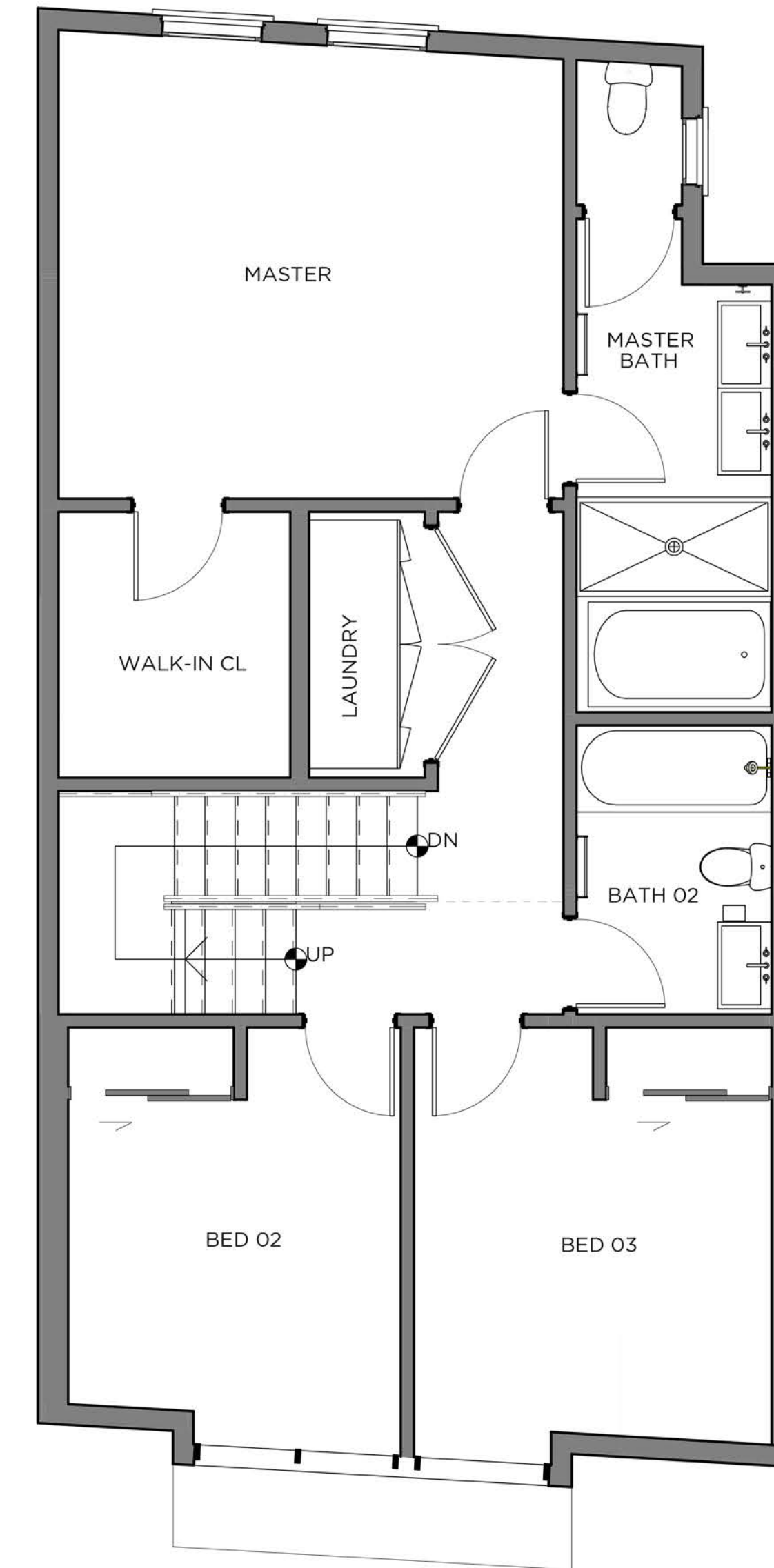
HANCOCK PARK



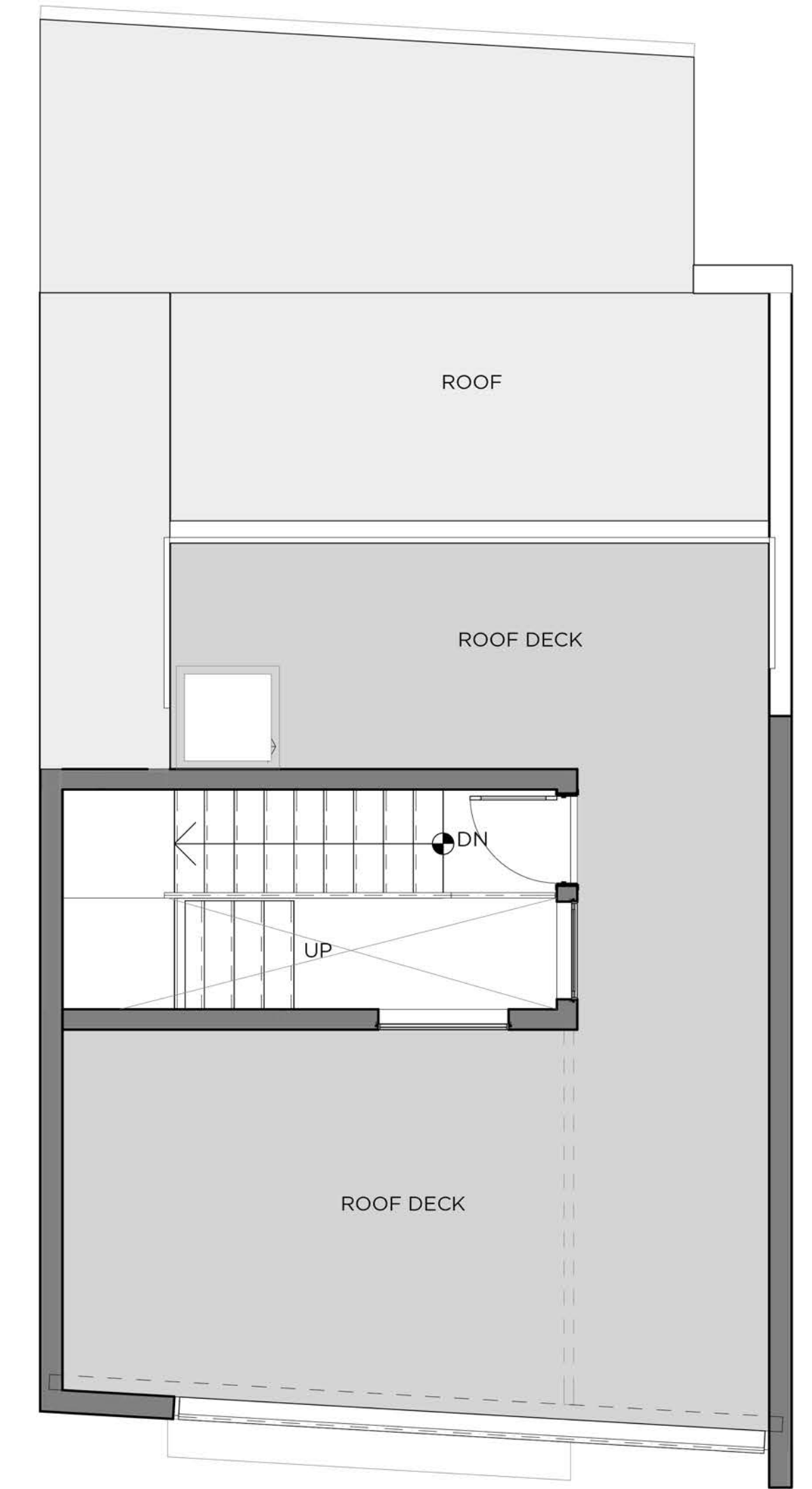
**LEVEL I** First Level Interior 360 SF  
Garage 443 SF



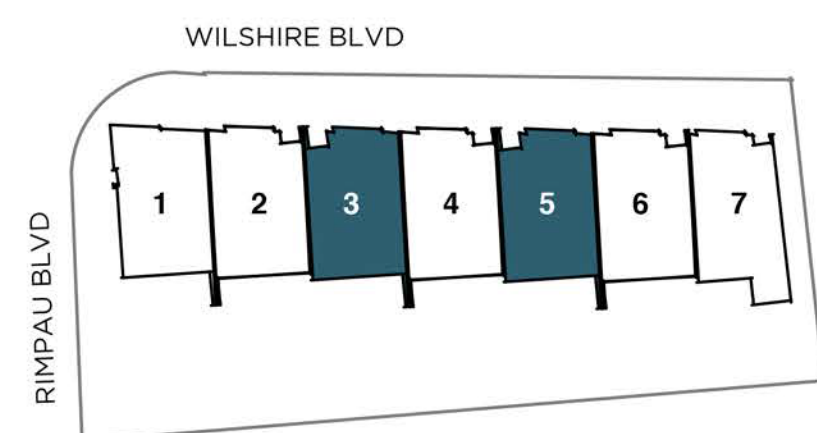
**LEVEL II** Second Level Interior 958 SF



**LEVEL III** Third Level 979 SF



**ROOFTOP TERRACE** Roof Deck 488 SF  
Roof Deck Enclosed Area 132 SF



## RESIDENCES THREE & FIVE

FOUR BEDROOM | THREE BATHROOM | DETACHED TOWNHOMES  
2,429 SF

THESEVENSLA.COM | 424.233.0922 | WILSHIRE & RIMPAU | HANCOCK PARK, CA 90004

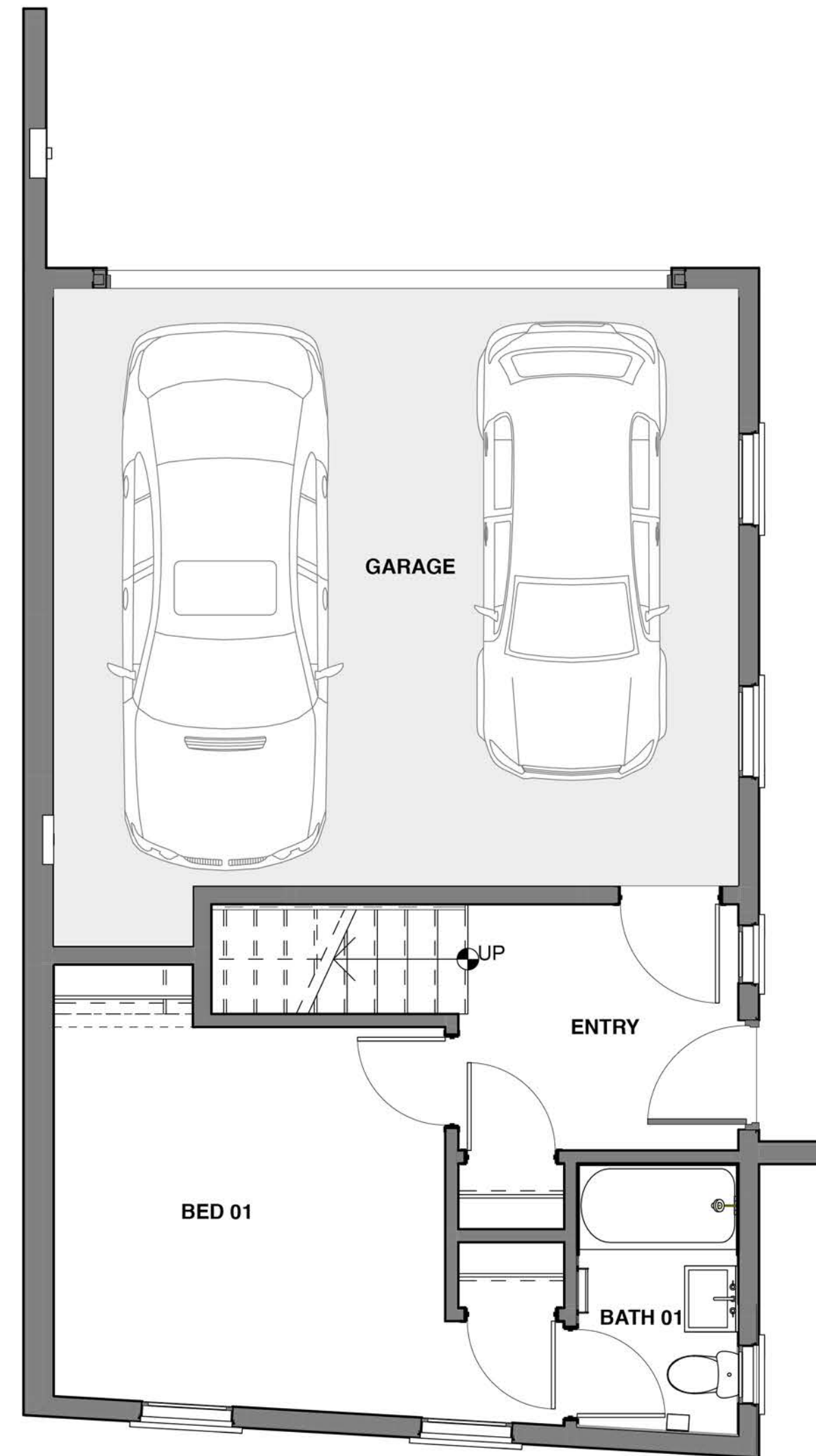
THE DEVELOPER RESERVES THE RIGHT TO MAKE MODIFICATIONS IN MATERIALS, SPECIFICATIONS, PLANS, PRICING, VARIOUS FEES, DESIGNS, SCHEDULING AND DELIVERY OF HOMES WITHOUT PRIOR NOTICE. THIS IS NOT AN OFFER TO SELL OR SOLICITATION TO BUY TO RESIDENTS IN JURISDICTIONS IN WHICH REGISTRATION REQUIREMENTS HAVE NOT BEEN FULFILLED, BUT IS INTENDED FOR INFORMATION ONLY. CALDRE# 01973483



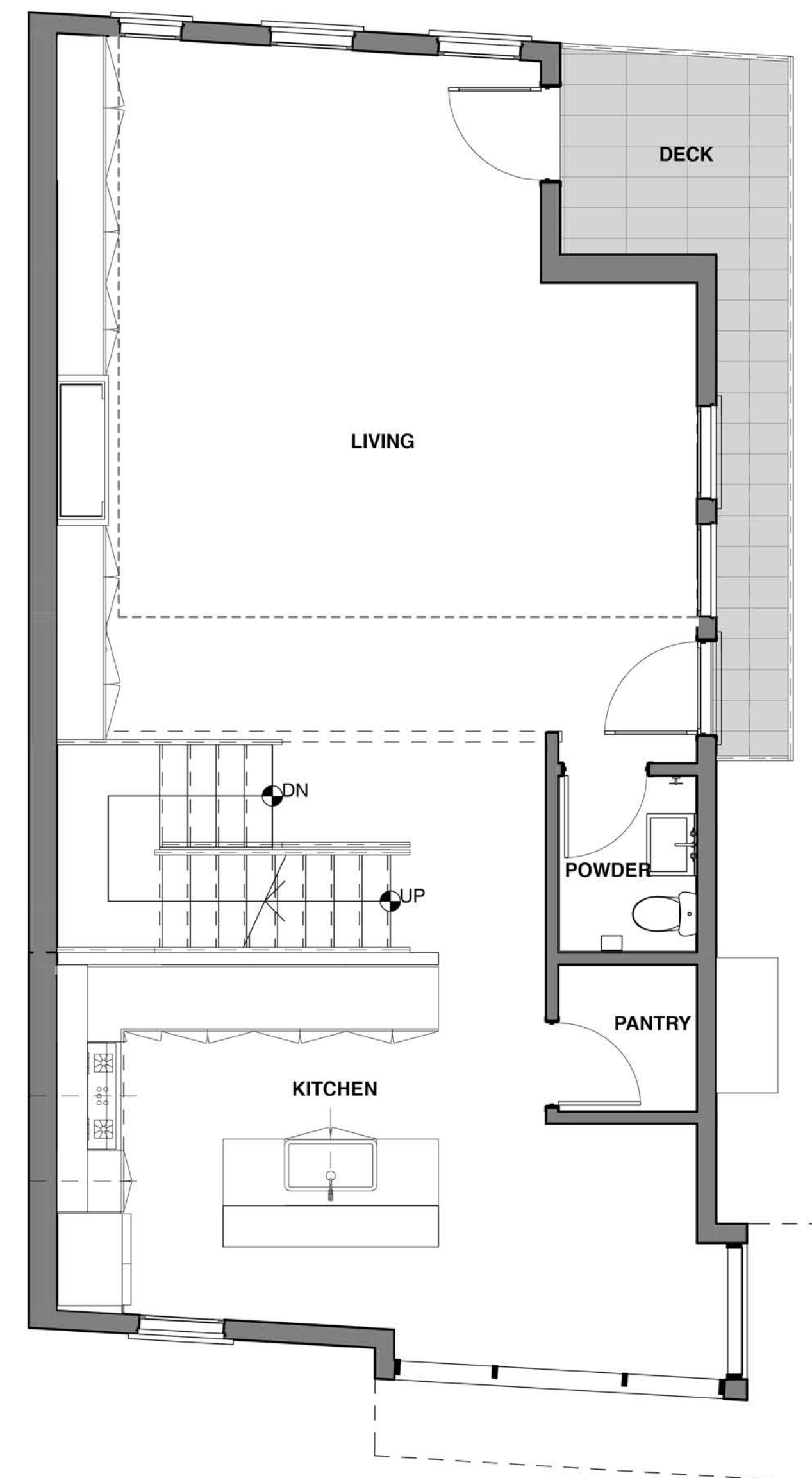


# THE SEVENS

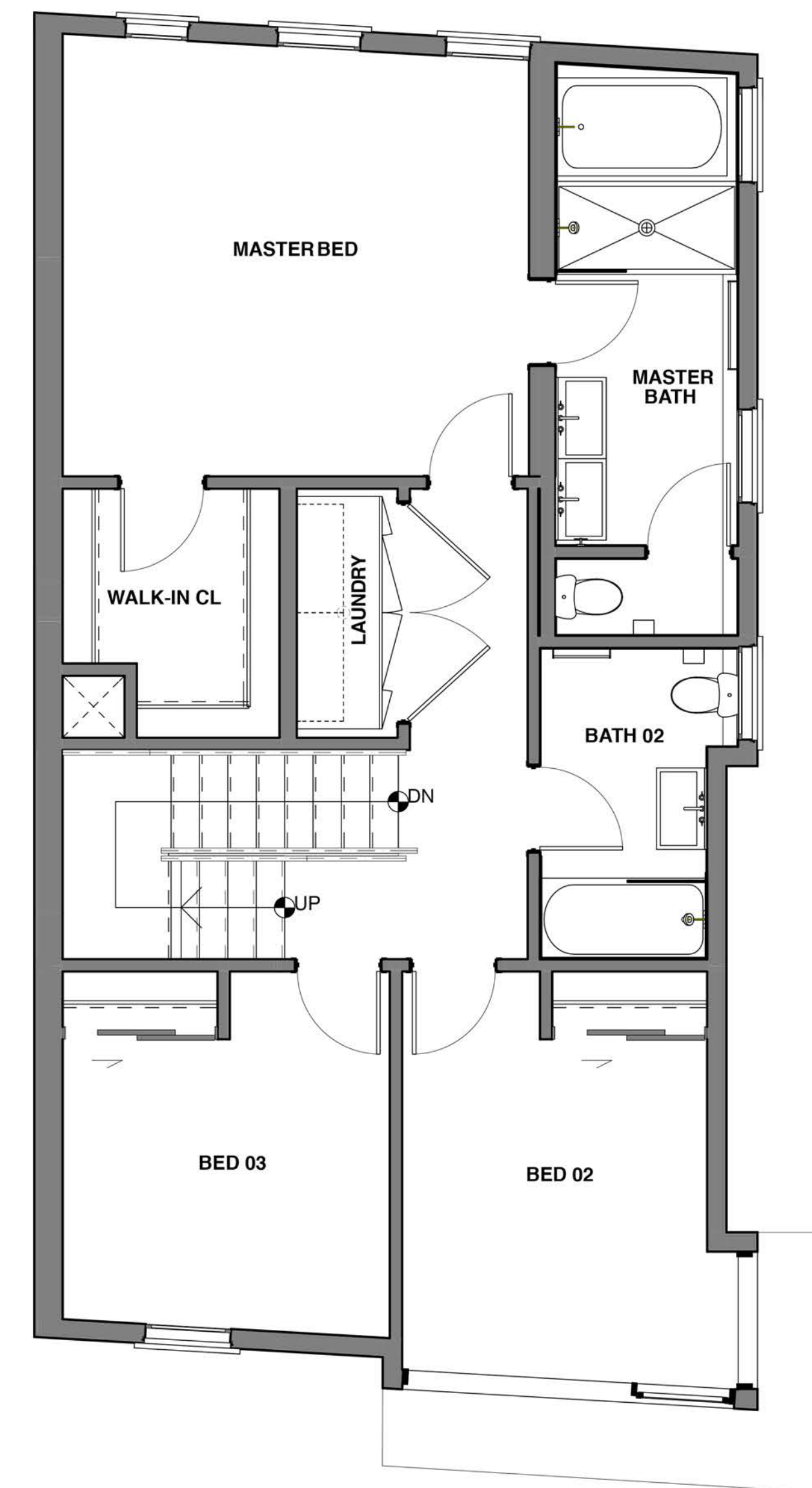
HANCOCK PARK



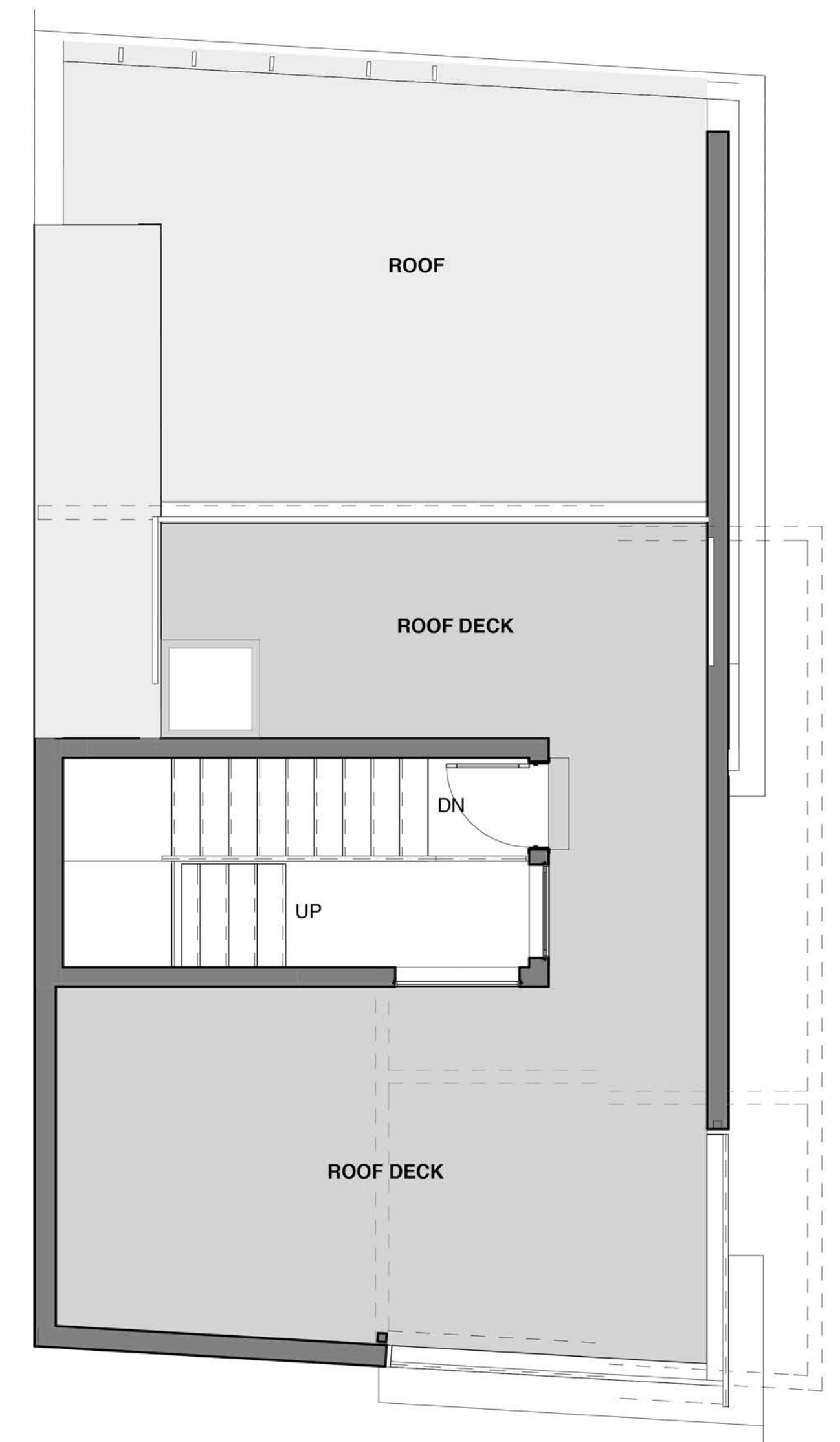
**LEVEL I** First Level Interior 364 SF  
Garage 429 SF



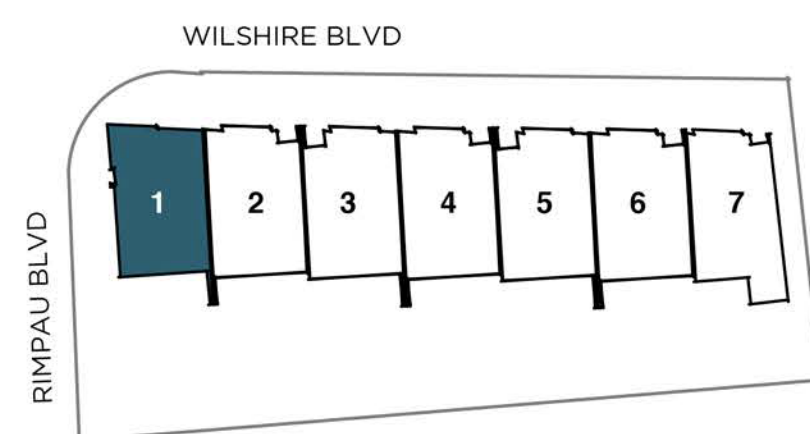
**LEVEL II** Second Level Interior 937 SF  
Second Level Deck 91 SF



**LEVEL III** Third Level 995 SF



**ROOFTOP TERRACE** Roof Deck 463 SF  
Roof Deck Enclosed Area 132 SF



## RESIDENCE ONE

FOUR BEDROOM | THREE BATHROOM | DETACHED TOWNHOMES  
2,428 SF

THESEVENSLA.COM | 424.233.0922 | WILSHIRE & RIMPAU | HANCOCK PARK, CA 90004

THE DEVELOPER RESERVES THE RIGHT TO MAKE MODIFICATIONS IN MATERIALS, SPECIFICATIONS, PLANS, PRICING, VARIOUS FEES, DESIGNS, SCHEDULING AND DELIVERY OF HOMES WITHOUT PRIOR NOTICE. THIS IS NOT AN OFFER TO SELL OR SOLICITATION TO BUY TO RESIDENTS IN JURISDICTIONS IN WHICH REGISTRATION REQUIREMENTS HAVE NOT BEEN FULFILLED, BUT IS INTENDED FOR INFORMATION ONLY. CALDRE# 01973483

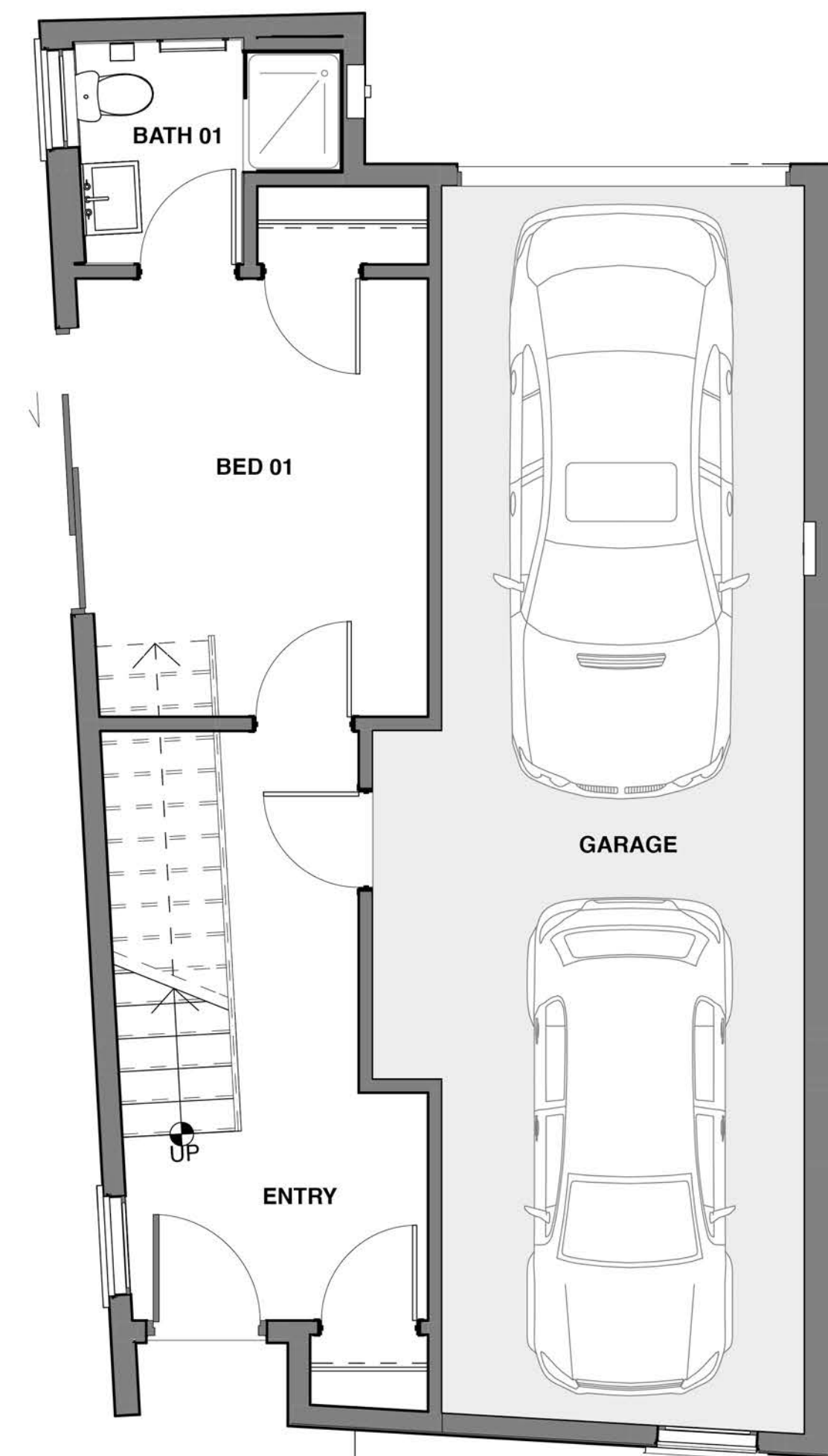




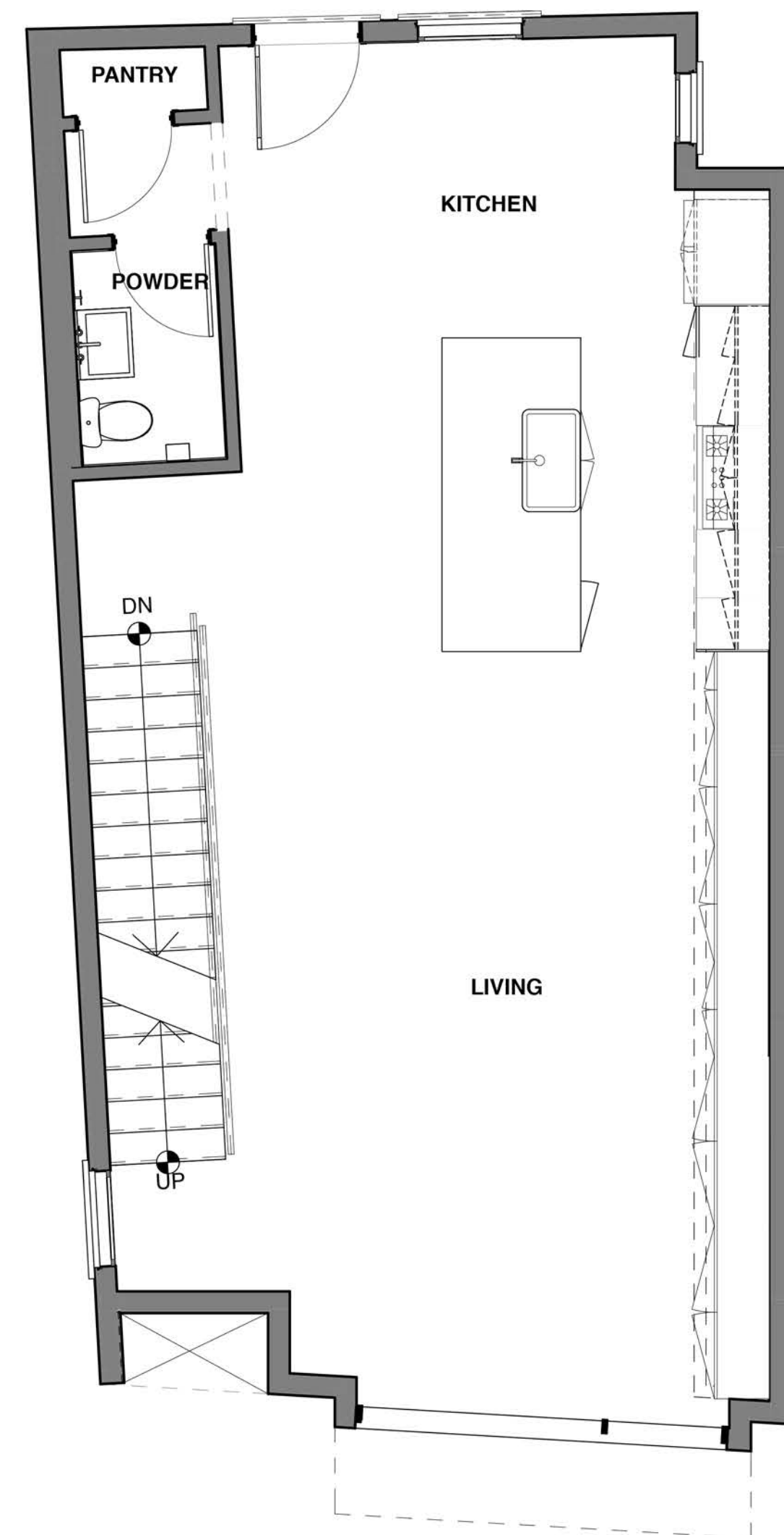


# THE SEVENS

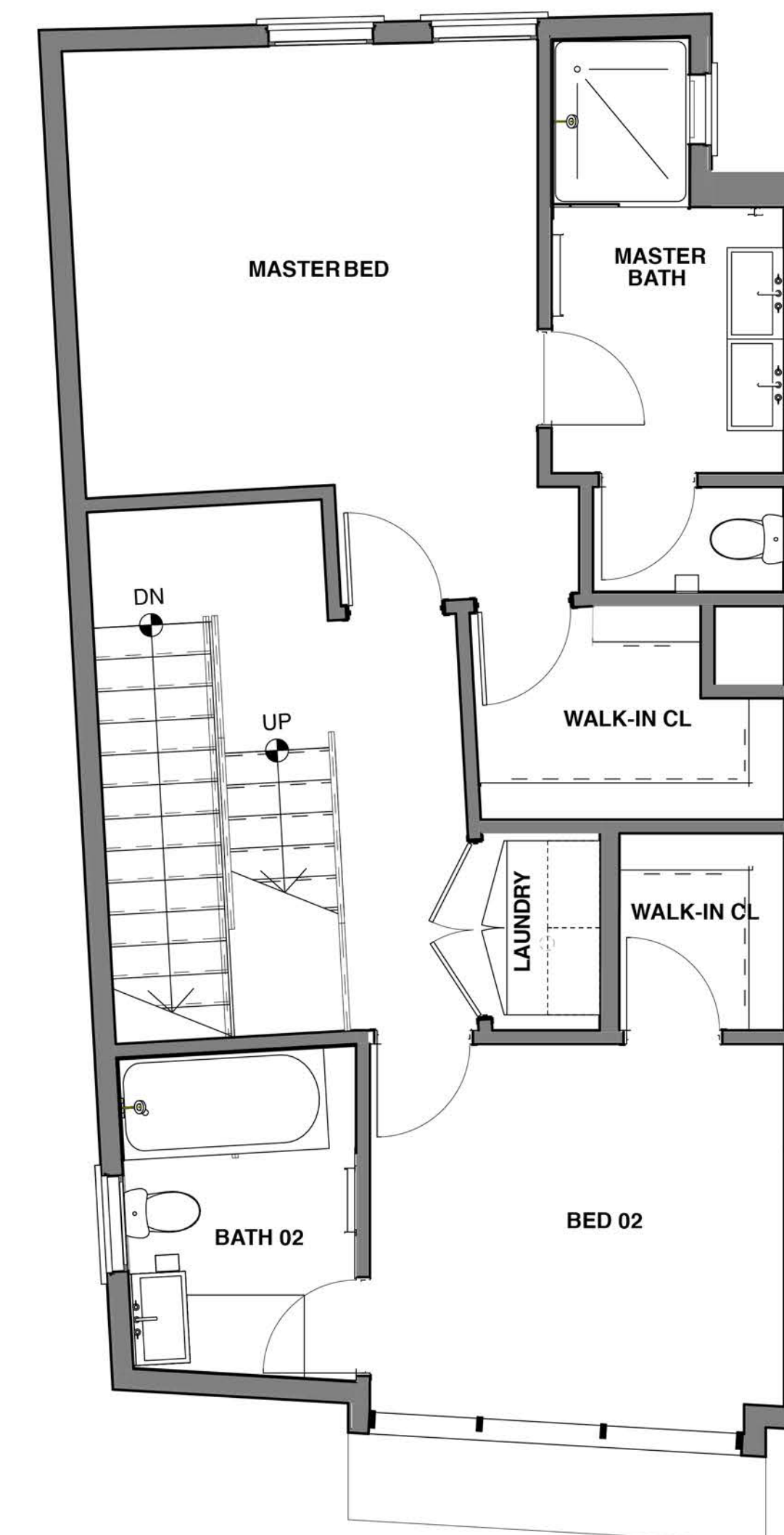
HANCOCK PARK



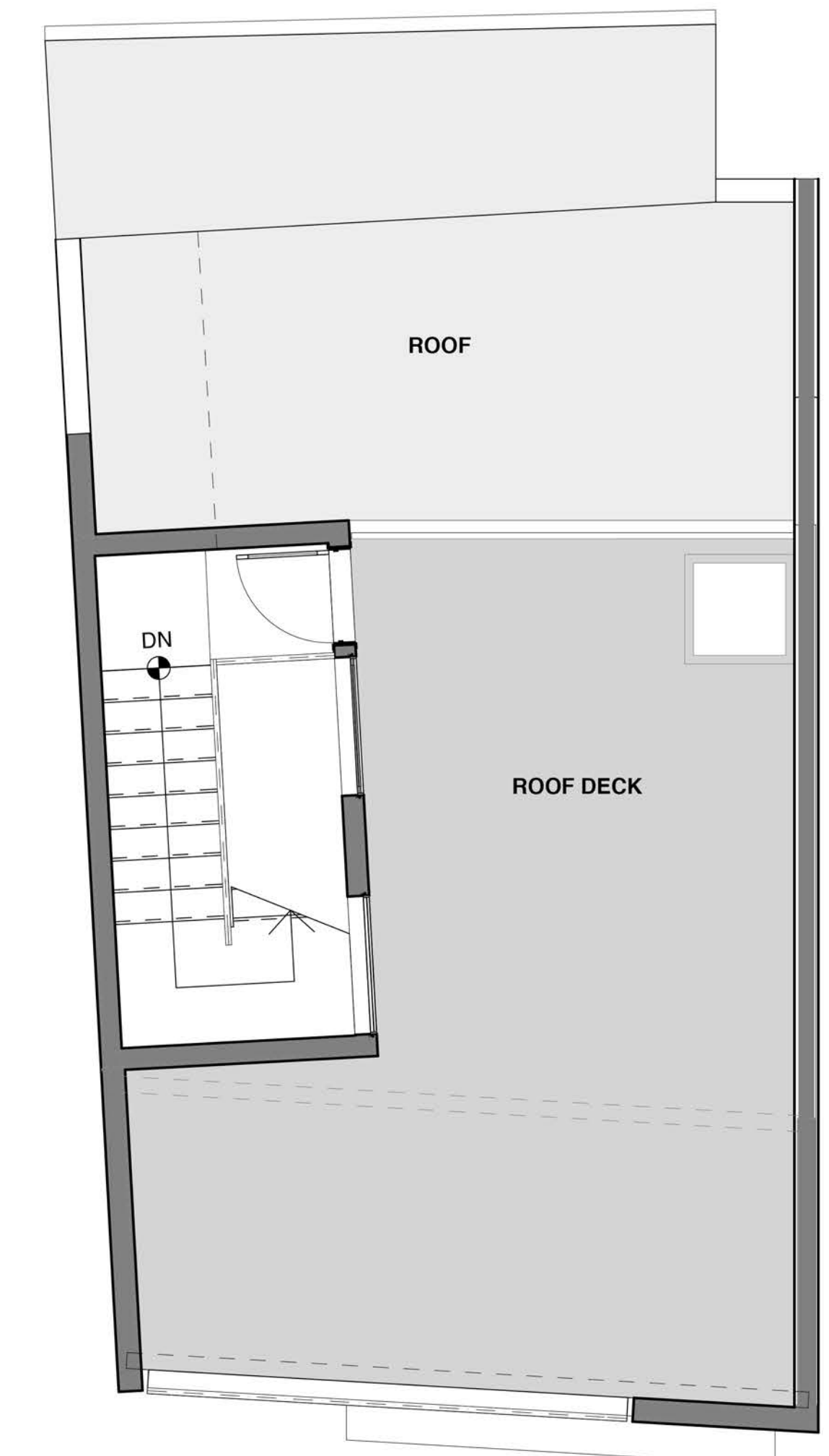
**LEVEL I** First Level Interior 364 SF  
Garage 415 SF



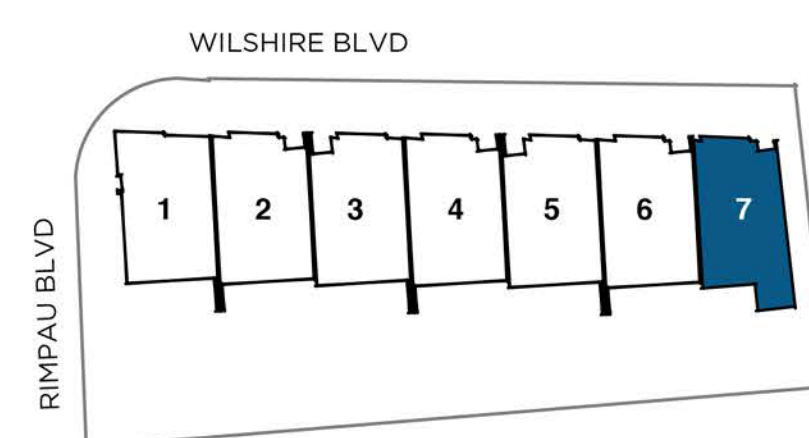
**LEVEL II** Second Level Interior 834 SF



**LEVEL III** Third Level 844 SF



**ROOFTOP TERRACE** Roof Deck 411 SF  
Roof Deck Enclosed Area 124 SF



## RESIDENCE SEVEN

FOUR BEDROOM | THREE BATHROOM | DETACHED TOWNHOMES  
2,166 SF

THESEVENSLA.COM | 424.233.0922 | WILSHIRE & RIMPAU | HANCOCK PARK, CA 90004

 THE DEVELOPER RESERVES THE RIGHT TO MAKE MODIFICATIONS IN MATERIALS, SPECIFICATIONS, PLANS, PRICING, VARIOUS FEES, DESIGNS, SCHEDULING AND DELIVERY OF HOMES WITHOUT PRIOR NOTICE. THIS IS NOT AN OFFER TO SELL OR SOLICITATION TO BUY TO RESIDENTS IN JURISDICTIONS IN WHICH REGISTRATION REQUIREMENTS HAVE NOT BEEN FULFILLED, BUT IS INTENDED FOR INFORMATION ONLY. CALDRE# 01973483

